

TYWYN  
**THE MAGIC LANTERN**  
 CINEMA

December 2024

Rhagfyr 2024



**FILMS • LIVE MUSIC • THEATRE • SPECIAL EVENTS**

**FFILMAU • CERDDORIAETH FYW • THEATR • DIGWYDDIADAU ARBENNIG**



## Table of Contents Tabl Cynnwys

|  |         |
|--|---------|
| <b>Films Showing</b>                           |         |
| Paddington In Peru.....                        | 5       |
| The Princess Bride.....                        | 5       |
| Portraits of Dangerous Women.....              | 5       |
| Timestalker.....                               | 5       |
| Gladiator II.....                              | 6       |
| The Wild Robot.....                            | 6       |
| Girls Will Be Girls.....                       | 6       |
| The Room Next Door.....                        | 6       |
| My Favourite Cake.....                         | 7       |
| The Magic Reindeer: Saving Santa's Sleigh..... | 7       |
| Conclave.....                                  | 7       |
| The Problem with People.....                   | 8       |
| Wicked.....                                    | 8       |
| Moana 2.....                                   | 9       |
| Red One.....                                   | 9       |
| Transformers One.....                          | 9       |
| <b>Art of Action Season</b> .....              | 10      |
| Crouching Tiger Hidden Dragon.....             | 10      |
| Kung Fu Panda 4.....                           | 10      |
| Polite Society.....                            | 10      |
| <b>Film Club</b> .....                         | 11      |
| <b>December Listings</b> .....                 | 12 - 13 |
| <b>Special Events</b> .....                    | 14 - 15 |
| André Rieu: Gold & Silver.....                 | 14      |
| Abergynolwyn Silver Band.....                  | 14      |
| CBeebies Christmas Panto.....                  | 14      |
| Quiz Night.....                                | 15      |
| Phantom of the Opera.....                      | 15      |
| <b>Members Screening</b> .....                 | 15      |
| <b>New Year's Eve Party</b> .....              | 16      |
| <b>Saturday Night Theatre</b> .....            | 17      |
| <b>Christmas Presence</b> .....                | 18 - 19 |
| <b>Music Nights</b> .....                      | 20 - 21 |
| <b>Become A Member</b> .....                   | 22      |
| <b>Cinema Merchandise</b> .....                | 23      |

## News Flash



We are delighted to be working with Tywyn Community Hub as part of their Warm Spaces Warm Food initiative.

From 9th December to the end of February

our Magic Monday screening will be **FREE to all** and will include after the film a hot soup lunch.

If you are only coming for lunch please pop in, phone or email to let us know so we can make sure we have enough soup!

## Fflach Newyddion!

Rydym yn falch o fod yn gweithio â Hwb Cymunedol Tywyn fel rhan o'u menter Ardaloedd Cynnes Bwyd Cynnes.

Rhwng 9 Rhagfyr a diwedd Chwefror bydd ein dangosiad Dydd Llun Hud AM DDIM i bawb a bydd yn cynnwys cinio cawl poeth ar ôl y ffilm.

Os ydych chi'n mynychu ar gyfer y cinio yn unig, gofynnwn yn garedig i chi alw i mewn, ffonio neu e-bostio i roi gwybod i ni, er mwyn i ni allu sicrhau bod digon o gawl i bawb!



## The Magic Lantern Experience

A visit to The Magic Lantern is unlike any other cinema experiences - from its beautiful murals to the fabulous and varied food and drink menu, which you order from your seat and is brought to your personal table by our friendly waiters.



## How to get the best experience...

- Book in advance
- Arrive at least 20 minutes early
- Remember that the bar closes during the film, so food and drinks need to be ordered in one go!

## Profiad y Llusern Hud

Tydi ymweliad â'r Llusern Hud yn ddim byd tebyg i brofiadau mewn sinemâu eraill - o'i furluniau hardd, i'r fwydlen fwyd a diod amrywiol ardderchog, sy'n caniatáu i chi archebu o'ch sedd, a bydd ein gweinyddion cyfeillgar yn dod â'ch archeb i'ch bwrdd personol chi.

## Sut i gael y profiad gorau...

- Archebwch ymlaen llaw
- Cyrhaeddwch o leiaf 20 munud ymlaen llaw
- Cofiwch fod y bar yn cau yn ystod y ffilm, felly mae angen archebu bwyd a diod gyda'i gilydd!



## MAGIC MONDAY

MM

Most Mondays at 11am.

### Relaxed Screening

Free from 9th Dec to the end of February and includes free soup after the film.

Thanks to Tywyn Community Hub

**Am ddim o 9 Rhagfyr tan ddiwedd mis Chwefror ac mae'n cynnwys cawl am ddim ar ôl y ffilm.**

**Diolch i Ganolfan Gymunedol Tywyn**

## LITTLE LANTERNEERS

LL

Every Sunday at 11am.

All tickets £3. **Relaxed Screening**

Anyone under 12 must be accompanied by an adult.

**Pob dydd Sul am 11am. Pob tocyn £3.**

### Relaxed Screening

**Rhaid i blant dan 12 oed gael cw mni oedolyn.**

## What is a Relaxed Screening?

These films are for those who may find one of our usual screenings challenging.

- The lights are kept on low
- The sound is turned down
- Talking and moving around is absolutely fine
- The bar remains open throughout the film
- The film will have descriptive subtitles where possible

## Beth yw Sgrinio Hamddenol?

**Mae'r ffilmiau hyn ar gyfer y rhai a allai fod yn gweld un o'n dangosiadau arferol yn heriol.**

- Mae'r goleuadau yn cael eu cadw'n isel
- Mae'r sŵn yn cael ei droi i lawr
- Mae siarad a symud o gwmpas yn berffaith
- Mae'r bar ar agor drwy gydol y ffilm
- Bydd gan y ffilm is-deitlau disgrifiadol lle bo hynny'n bosibl

## TEEN SCREENS

TS

Every Wednesday at 4pm

The Lantern will be open from 3pm so Tywyn School pupils are welcome to come straight from school.

Tickets for 12 - 19 year olds are £5 and include a small popcorn and a soft drink.

**All welcome but standard tickets apply to non teens!**

**Pob dydd Mercher am 4pm. Bydd Y Llusern ar agor o 3pm felly mae croeso i ddisgyblion Ysgol Tywyn ddod draw yn syth o'r ysgol.**

**Mae tocynnau i'r rhai rhwng 12 - 19 oed yn costio £5 ac yn cynnwys popgorn bach a diod feddal neu sudd/cordial. Mae croeso i bawb ond mae prisiau tocynnau arferol yn berthnasol i'r rhai nad ydynt yn eu harddegau!**

## GOLDEN AGERS

GA

Every Thursday afternoon. **HOH**

If you are over the golden age of 60 then tickets are £4 and include a cup of tea or filter coffee.

**All Welcome. Special ticket prices for anyone over 60.**

**HOH Pob prynhawn Iau, os ydych dros eich 60 yna mae tocynnau yn costio £4 gan gynnwys paned o de neu goffi hidl. Mae croeso i bawb ond mae prisiau tocynnau arferol yn berthnasol i'r rhai dan 60.**

**HOH** – HARD OF HEARING

These films will include descriptive subtitles. **Bydd y ffilmiau hyn yn cynnwys isdeitlau disgrifiadol.**

**MM** – Magic Monday / Dyddiau Llun Llawn Hud

**TS** – Teen Screen / Arddangosiadau i'r Arddegau

**LL** – Little Lanterneers / Llusernwyr Bach

**GA** – Golden Agers / Gwylwyr Euraid



**Paddington in Peru** PG 1hr 42m

Paddington is back for another round of adventures! Paddington and his adopted family, the Browns, decide to visit his aunt Lucy in Peru, but circumstances lead them towards misadventures!

**Mae Paddington a'i deulu mabwysiedig, y teulu Brown, yn penderfynu ymweld â'i fodryb Lucy ym Mheriw, ond mae amgylchiadau yn eu harwain ar gyfeiliorn!**



**The Princess Bride** PG 1hr 38m

In this enchantingly cracked fairy tale, the beautiful Princess Buttercup and the dashing Westley must overcome staggering odds to find happiness amid six-fingered swordsmen, murderous princes, Sicilians and rodents of unusual size.

**Yn y stori dylwyth teg hudolus hon gyda gogwydd gwahanol, mae'n rhaid i'r Dywysoges Buttercup brydferth a Westley golygus oresgyn rhwystrau syfrdanol i ganfod hapusrwydd ymysg cleddyfwyr â chwe bys, tywysogion llofruddiol, Sisiliaid a chnofilod o bob lliw a llun.**



**Portraits of Dangerous Women** PG 1hr 42m

This is a wry tale set in the English countryside, full of humour, fizzing characters and a sense of anarchy and life. The lives of three strangers collide in a bizarre road accident.

**Dyma stori eironig wedi'i lleoli yng nghefn gwlad Lloegr, yn llawn hiwmor, cymeriadau bywiog ac ymdeimlad o anrhefn a bywyd. Mae bywydau tri dieithryn yn gwrthdaro mewn damwain ffordd hynod.**



**Timestalker** 15 1hr 30m

Hapless Agnes repeatedly falls for the wrong guy, dies a grim death, and is reincarnated a century later. She experiences romantic misfortune through different eras of history, and finally tries to break the cycle.

**Hapless Agnes yn cwmpo dro ar ôl tro ar gyfer y dyn anghywir, yn marw marwolaeth ddirifol, ac yn cael ei ailymgnawdoliad ganrif yn ddiweddarach. Mae hi'n profi anffawd ramantus trwy wahanol gyfnodau o hanes, ac yn olaf yn ceisio torri'r cylch.**

See the complete listings for our films and events on pages 10 & 11.



**Gladiator II** 15 2hr 28m

Directed by: Ridley Scott  
Starring: Paul Mescal, Pedro Pascal, Denzel Washington  
Genre: Epic/Action/Adventure/Drama

Years after witnessing the death of revered hero Maximus at the hands of his uncle, Lucius is forced to enter the Colosseum.

**Blynnyddoedd ar ôl gweld marwolaeth yr arwr enwog Maximus trwy law ei ewythr, mae Lucius yn cael ei orfodi i fynd i mewn i'r Colosseum.**



**The Wild Robot**  
U 1hr 42m

This absolutely stunning new DreamWorks feature tells the story of Roz, a robot who finds herself stranded on a remote island.

**Mae'r ffilm nodwedd newydd hon gan DreamWorks, sy'n syfrdanol o dda, yn dweud stori Roz, sef robot sy'n canfod ei bod yn sownd ar ynys bellennig.**



**Girls Will Be Girls** 15 1hr 58m

Directed by: Shuchi Talati  
Starring: Preeti Panigrahi, Kani Kusruti  
Genre: Drama, Romance

In a strict boarding school nestled in the Himalayas, 16-year-old Mira discovers desire and romance; but her sexual, rebellious awakening is disrupted by her mother who never got to come-of-age herself.

**Mewn ysgol breswyl lem yn yr Himalayas, mae Mira sy'n 16 mlwydd oed yn darganfod chwant a rhantant; ond mae ei deffroad rhywiol, gwrthryfelgar yn cael ei amharu gan ei mam na chafodd erioed y cyfle i aeddfedu yn yr un modd ei hun.**

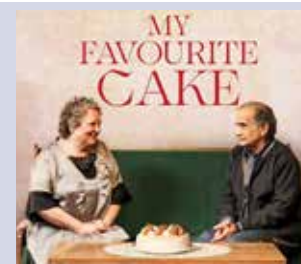


**The Room Next Door** MM GA  
12A 1hr 47m

Directed by: Pedro Almodóvar  
Starring: Tilda Swinton, Julianne Moore  
Genre: Drama/Comedy

Ingrid and Martha were close friends in their youth. After years of being out of touch, they meet again in an extreme but strangely sweet situation.

**Roedd Ingrid a Martha yn ffrindiau agos yn eu hieuenctid. Ar ôl blynnyddoedd o fod allan o gysylltiad, maent yn cyfarfod eto mewn sefyllfa eithafol ond rhyfedd o felys.**



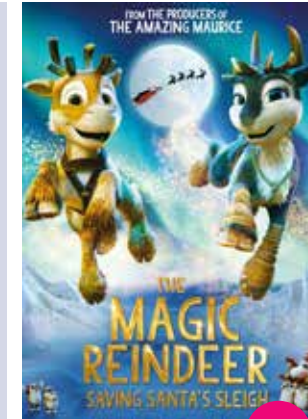
**My Favourite Cake**  
12A 1hr 37m

Directed by: Maryam Moghadam & Behtash Sanaeeha  
Starring: Lili Farhadpour, Esmail Mehrabi

Genre: Persian Tragic-comedy/Romantic/Drama  
Accolades: Best Film at Berlin International Film Festival, 100% Rotten Tomatoes score

We absolutely adore this film - so much we chose it for our member's free screening! Seventy year old Mahin, solitary until now, chooses to revive her love life. A chance encounter becomes an unforgettable evening.

**Rydym wrth ein bodd â'r ffilm hon - yn gymaint felly fel ein bod wedi ei dewis ar gyfer y dangosiad am ddim i'n haelodau! Mae Mahin, sy'n 70 oed, ac wedi bod ar ei phen ei hun tan nawr, yn dewis adfywio ei bywyd carwriaethol. Mae cyfarfod ar hap yn troi'n noson i'w chofio.**



**Saving Santa's Sleigh** U 1hr 25m

Directed by: Kari Juusonen, Jørgen Lerdam  
Starring: Kari Juusonen, Marteinn Thorisson, Hannu Tuomainen  
Genre: Animation/Adventure

Niko is a flying reindeer boy whose biggest dream is to become a member of Santa's flying forces. But instead he loses Santa's sleigh and during pursuit to get it back he learns the importance of friendship and doing things your own way.

**Mae Niko yn fachgen carw hedfan a'i freuddwyd wyaft yw dod yn aelod o lu oedd hedfan Siôn Corn. Ond yn lle hynny mae'n colli sled Siôn Corn ac wrth fynd ar drywydd i'w gael yn ôl mae'n dysgu pwysigrwydd cyfeillgarwch a gwneud pethau eich ffordd eich hun.**



**Conclave**  
12A 2hr

Directed by: Edward Berger  
Starring: Ralph Fiennes, Stanley Tucci, John Lithgow  
Genre: Mystery/Drama/Thriller

Are films about electing a new pope allowed to be this entertaining? When Cardinal Lawrence is tasked with leading one of the world's most secretive and ancient events, selecting a new Pope, he finds himself at the centre of a conspiracy that could shake the very foundation of the Catholic Church.

**A yw ffilmiau am ethol pab newydd i fod yn ddifyr? Pan fydd Cardinal Lawrence yn gyfrifol am arwain un o ddigwyddiadau mwyaf cyfrinachol a hynafol y byd, gan ddewis Pab newydd, mae'n cael ei hun yng nghanol cynllwyn a allai ysgwyd sylfaen yr Eglwys Gatholig.**





**The Problem with People**  
15 1hr 42m

Directed by: Chris Cottam  
Starring: Colm Meaney, Paul Reiser, Lucianne McEvoy  
Genre: Comedy

Two distant cousins who've never met - one in NYC, the other in the smallest town there is in Ireland - come together to finally put an end to a generations-long family feud. It doesn't go well. The Problem With People, set in beautifully lush Irish countryside, is a heartwarming comedy about family, world peace... and sheep.

**Mae dau gefnder pell nad ydyn nhw erioed wedi cwrdd - un yn Ninas Efrog Newydd, y llall yn y dref leiaf sydd yn Iwerddon - yn dod at ei gilydd o'r diwedd i roi diwedd ar gynnen deuluol sy'n bodoli ers cenedlaethau. Nid yw pethau'n mynd yn dda. Mae The Problem With People, sydd wedi'i gosod yng nghefn gwald hyfryd Iwerddon, yn gomedi i godi calon am deulu, heddwch byd... a defaid.**

**Wicked**  
PG 2hr 40m

Directed by: Jon M. Chu  
Starring: Cynthia Erivo, Ariana Grande  
Genre: Musical/Fantasy

Accolades: Expected Oscar winner!

After two decades as one of the most beloved and enduring musicals on the stage, Wicked makes its long-awaited journey to cinemas as a spectacular, generation-defining two-part cinematic event this Christmas! Wicked tells the story of Elphaba, the future Wicked Witch of the West and her relationship with Glinda, the Good Witch of the North.

**Ar ôl dau ddegawd fel un o'r sioeau cerdd mwyaf poblogaidd a pharhaus ar y llwyfan, mae Wicked yn gwneud ei thaith hir-ddisgwyliedig i sinemâu, fel digwyddiad sinematig dwy ran ysblennydd sy'n diffinio cenedlaeth, y Nadolig hwn! Mae Wicked yn adrodd stori Elphaba, Gwrach Ddrwg y Gorllewin a'i pherthynas â Glinda, Gwrach Dda y Gogledd.**



**Moana 2**  
PG 1hr 40m

Directed by: David G Derrick Jr, Jason Hand & Dana Ledoux Miller  
Starring: Dwayne Johnson, Auli'i Cravalho, Alan Tudyk  
Genre: Animation/Family/Adventure

We are so excited for the return of Disney's most sea-loving and strong-willed princesses. After receiving an unexpected call from her wayfinding ancestors, Moana journeys to the far seas of Oceania and into dangerous, long-lost waters for an adventure unlike anything she has ever faced.

**Rydym mor gyffrous o weld tywysoges Disney mwyaf penderfynol a mwyaf cariadus y môr yn dychwelyd. Ar ôl derbyn galwad annisgwyl gan ei chyndeidiau sy'n dod o hyd i ffordd, mae Moana yn teithio i foroedd pellaf Oceania ac i ddyfroedd peryglus, colledig am antur wahanol i unrhyw beth y mae hi erioed wedi'i wynebu.**

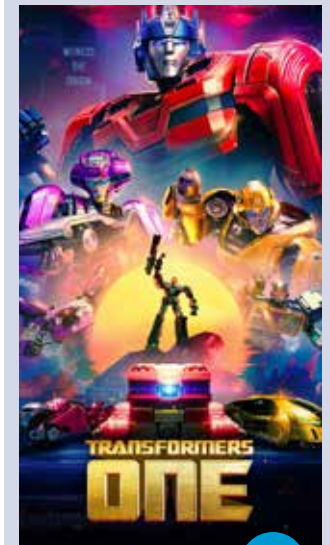


**Red One** 2A 2hr 3m

Directed by: Jake Kasdan  
Starring: Chris Evans, Dwayne Johnson, Lucy Liu  
Genre: Christmas/Comedy/Action

A perfect combination of punchy action and Christmas silliness... After Santa Claus (code name: Red One, of course) is kidnapped, the North Pole's Head of Security (Dwayne Johnson) must team up with the world's most infamous bounty hunter (Chris Evans) in a globe-trotting, action-packed mission to save Christmas.

**Cyfuniad perffaith o weithredoedd cryf a llonyddwch y Nadolig... Ar ôl i Siôn Corn (cod-enw: Red One, wrth gwrs) gael ei herwgipio, mae Pennaeth Diogelwch Pegwn y Gogledd (Dwayne Johnson) yn uno gyda heliwr dynion mwyaf anaf y byd (Chris Evans) ar genhadaeth llawn antur, mewn sawl gwlad i achub y Nadolig.**



**Transformers One** TS  
PG 1hr 44m

Directed by: Josh Cooley  
Starring: Chris Hemsworth, Scarlett Johansson, Steve Buscemi  
Genre: Animation/Sci-fi/Adventure

This is the untold origin story of Optimus Prime and Megatron, better known as sworn enemies, but once were friends bonded like brothers who changed the fate of Cybertron forever.

**Dyma stori wreiddiol Optimus Prime a Megatron, sy'n fwy adnabyddus fel gelynyddion noeth, ond a oedd unwaith yn ffrindiau wedi bondio fel brodyr a newidiodd dynged Cybertron am byth.**

ART of ACTION

BFI FAN

THE NATIONAL LOTTERY

### Sunday 1st December



**Kung Fu Panda 4** LL  
PG 1hr 32m Starts at 11am

Po must train a new warrior when he's chosen to become the spiritual leader of the Valley of Peace.

**Mae'r panda yn ôl! Rhaid i Po hyfforddi rhyfelwr newydd pan fydd wedi dewis dod yn arweinydd ysbrydol y Dyffryn Heddwch.**

**Crouching Tiger, Hidden Dragon**  
12 1hr 55m Starts at 6pm



This remarkable multi award winning martial arts epic follows a young Chinese warrior, who steals a sword from a famed swordsman and then escapes into a world of romantic adventure, with a mysterious man in the frontier of the nation.

**Mae'r ffilm grefft ymladd anhygoel hon wedi ennill nifer o wobrau, ac mae'n dilyn ymladdwr ifanc o Tsieina sy'n dwyn cleddyf gan gleddyfwr enwog ac yna'n dianc i fyd o antur ramantus, gyda dyn dirgel ar gyrion y genedl.**



**Polite Society**  
12 1hr 40m Starts at 2pm

Polite Society follows martial artist-in-training Ria Khan who believes she must save her older sister Lena from her impending marriage.

**Mae Polite Society yn dilyn Ria Khan sy'n hyfforddi i fod yn grefftwr ymladd, ac sy'n credu bod rhaid iddi achub ei chwaer hŷn rhag ei phriodas arfaethedig.**

### Martial Arts Workshop at 4pm

**Free but booking required.**

As part of our Art of Action Season, Sunday 1st December is Martial Arts Day! Between the thrilling action films Polite Society and Crouching Tiger Hidden Dragon we will be holding a special Introduction to Martial Arts Workshop. This workshop is completely free but spaces are limited so please book a place by emailing [tywyncinema@gmail.com](mailto:tywyncinema@gmail.com)

**Fel rhan o'n Tymor Celfyddyd Antur, mae dydd Sul 1 Rhagfyr yn ddiwrnod Crefft Ymladd! Rhwng y ffilmiau antur cyffrous Polite Society a Crouching Tiger Hidden Dragon byddwn yn cynnal Gweithdy Cyflwyniad i Grefft Ymladd arbennig. Cynhelir y gweithdy am ddim ond mae nifer y lleoedd yn gyfyngedig, felly archebwch eich lle drwy e-bostio [tywyncinema@gmail.com](mailto:tywyncinema@gmail.com)**



### Did you know that The Magic Lantern has a film club?

Each month the club chooses what films they would like to see and then meets afterwards to discuss them. It's a friendly and informal group - everyone is more than welcome and the idea is to have a chat about the film and provide extra information about the film, the cast and the director. You can join our Facebook Group - Magic Lantern Film Club or email [lanternfilmclub@gmail.com](mailto:lanternfilmclub@gmail.com)

Supported by Film Hub Wales as part of the BFI Film Audience Network (FAN), made possible by the National Lottery.



THE NATIONAL LOTTERY



Llywodraeth Cymru  
Welsh Government

### Oeddech chi'n gwybod bod gan Y Lluern Hud glwb ffilmiau?

Bob mis, bydd y clwb yn dewis pa ffilmiau yr hoffai'r aelodau eu gweld ac yna'n cyfarfod wedyn i'w trafod. Mae'n grŵp cyfeillgar ac anffurfiol - mae croeso cynnes i bawb, a'r syniad yw cael sgwrs am y ffilm a rhoi rhagor o wybodaeth am y ffilm, y cast a'r cyfarwyddwr. Gallwch ymuno â'n Grŵp Facebook - Magic Lantern Film Club neu e-bostiwch [lanternfilmclub@gmail.com](mailto:lanternfilmclub@gmail.com)

Cefnogir gan Ganolfan Ffilm Cymru fel rhan o Rwydwaith Cynulleidfa Ffilm y BFI (FAN), a wedi wnaed yn bosib gan y Loteri Genedlaethol

This month's meetings will take place after the film on the following dates:

Sunday 1st December -  
**Crouching Tiger, Hidden Dragon**

Monday 9th December -  
**Gladiator II**

Thursday 12th December -  
**My Favourite Cake**

Cynhelir cyfarfodydd y mis hwn ar ôl y ffilmiau a gynhelir ar y dyddiadau a ganlyn:

Dydd Sul 1 Rhagfyr -  
**Crouching Tiger, Hidden Dragon**

Dydd Llun 9 Rhagfyr -  
**Gladiator II**

Dydd Iau 12 Rhagfyr -  
**My Favourite Cake**



# December Programme

Please see website for full film details and trailers

Cymerwch gip ar ein gwefan i weld manylion llawn y ffilmiau a chipolwg ohonynt

# Rhaglan Rhagfyr

|        |        |  |         |                         |
|--------|--------|--|---------|-------------------------|
| Sun 1  | 11am   | Kung Fu Panda 4 PG                                       | 1hr 32m | LL <b>Art of Action</b> |
|        | 2pm    | Polite Society 12  | 1hr 40m | <b>Art of Action</b>    |
|        | 4pm    | <b>Martial Arts Workshop</b>                             |         | <b>Art of Action</b>    |
|        | 6pm    | Crouching Tiger Hidden Dragon 12                         | 1hr 55m | <b>Art of Action</b>    |
| Mon 2  | 11am   | The Princess Bride PG                                    | 1hr 38m | MM                      |
|        | 7pm    | Timestalker 15   | 1hr 30m | HOH                     |
| Tue 3  | 3pm    | Portraits of Dangerous Women 15                          | 1hr 33m |                         |
|        | 6pm    | <b>Exhibition on Screen: Van Gogh Poets &amp; Lovers</b> |         |                         |
|        | 9pm    | <b>Quiz Night</b>  |         | Doors 8.30pm            |
| Wed 4  | 4pm    | The Princess Bride PG                                    | 1hr 38m | TS                      |
|        | 7.30pm | Portraits of Dangerous Women 15                          | 1hr 33m |                         |
| Thu 5  | 1pm    | The Princess Bride PG                                    | 1hr 38m | GA                      |
|        | 7pm    | Girls will be Girls 15                                   | 1hr 58m |                         |
| Fri 6  | 6pm    | Gladiator II 15  | 2hr 28m |                         |
|        | 9pm    | <b>Friday Night is Music Night - Open Mic Night</b>      |         | Doors 8.30pm            |
| Sat 7  | 3pm    | <b>André Rieu Gold and Silver</b>                        |         |                         |
|        | 8pm    | Gladiator II 15  | 2hr 28m |                         |
| Sun 8  | 11am   | The Magic Reindeer:<br>Saving Santa's Sleigh U           | 1hr 25m | LL                      |
|        | 4pm    | <b>Abergynolwyn Silver Band</b>                          |         |                         |
| Mon 9  | 11am   | The Room Next Door 12A                                   | 1hr 47m | MM                      |
|        | 7pm    | Gladiator II 15  | 2hr 28m | HOH                     |
| Tue 10 | 1pm    | Gladiator II 15  | 2hr 28m |                         |
|        | 6pm    | My Favourite Cake 12A                                    | 1hr 37m |                         |
|        | 9pm    | <b>Quiz Night</b>  |         | Doors 8.30pm            |
| Wed 11 | 4pm    | Transformers One PG                                      | 1hr 44m | TS                      |
|        | 7.30pm | Gladiator II 15  | 2hr 28m |                         |
| Thu 12 | 1pm    | The Room Next Door 12A                                   | 1hr 47m | GA                      |
|        | 7pm    | My Favourite Cake 12A                                    | 1hr 37m |                         |
| Fri 13 | 6pm    | Conclave 12A   | 2hr     |                         |
|        | 9pm    | <b>Friday Night is Music Night with The Dyfies</b>       |         | Doors 8.30pm            |
| Sat 14 | 1pm    | <b>Cbeebies Panto: Beauty and the Beast</b>              |         |                         |
|        | 4pm    | The Problem with People 15                               | 1hr 42m |                         |
|        | 7pm    | Conclave 12A   | 2hr     |                         |
| Sun 15 | 11am   | The Wild Robot U   | 1hr 42m | LL                      |
|        | 3pm    | Gladiator II 15  | 2hr 28m |                         |
| Mon 16 | 11am   | The Wild Robot U   | 1hr 42m | MM                      |
|        | 7pm    | Conclave 12A   | 2hr     | HOH                     |
| Tue 17 | 1pm    | Conclave 12A   | 2hr     |                         |
|        | 6pm    | The Problem with People 15                               | 1hr 42m |                         |
|        | 9pm    | <b>Quiz Night</b>  |         | Doors 8.30pm            |

|                         |         |  |         |              |
|-------------------------|---------|--|---------|--------------|
| Wed 18                  | 4pm     | Paddington In Peru PG  | 1hr 42m | TS           |
|                         | 7.30pm  | Conclave 12A   | 2hr     |              |
| Thu 19                  | 1pm     | The Wild Robot U   | 1hr 42m | GA           |
|                         | 7pm     | The Problem with People 15                                     | 1hr 42m |              |
| Fri 20                  | 5.30pm  | Wicked PG  | 2hr 40m |              |
|                         | 9pm     | <b>Friday Night is Music Night with the Magic Lantern Band</b> |         | Doors 8.30pm |
| Sat 21                  | 11am    | The Magic Reindeer:<br>Saving Santa's Sleigh U                 | 1hr 25m |              |
|                         | 2.30pm  | Wicked PG  | 2hr 40m |              |
|                         | 7pm     | Red One 12A  | 2hr 3m  |              |
| Sun 22                  | 11am    | <b>Cbeebies Panto: Beauty and the Beast</b>                    |         |              |
|                         | 3pm     | Red One 12A  | 2hr 3m  |              |
|                         | 7pm     | Wicked PG  | 2hr 40m |              |
| Mon 23                  | 12pm    | The Magic Reindeer:<br>Saving Santa's Sleigh U                 | 1hr 25m |              |
|                         | 2.30pm  | Wicked PG  | 2hr 40m | HOH          |
|                         | 7pm     | Red One 12A  | 2hr 3m  | HOH          |
| Tue 24                  | 2pm     | Transformers One PG  | 1hr 44m | Relaxed      |
|                         | 6pm     | Wicked PG  | 2hr 40m |              |
| Wed 25                  | 11am    | <b>Christmas Presence</b>                                      |         |              |
| Thu 26                  |         | <b>CLOSED</b>  |         |              |
| Fri 27                  | 1.30pm  | Moana 2 PG   | 1hr 40m |              |
|                         | 5pm     | Wicked PG  | 2hr 40m |              |
|                         | 9pm     | <b>Friday Night is Music Night with Tongue &amp; Groove</b>    |         | Doors 8.30pm |
| Sat 28                  | 3pm     | Red One 12A  | 2hr 3m  |              |
|                         | 7.30pm  | <b>Phantom of the Opera at the Royal Albert Hall</b> PG        | 2hr 40m |              |
| Sun 29                  | 11am    | The Magic Reindeer:<br>Saving Santa's Sleigh U                 | 1hr 25m | Relaxed      |
|                         | 2pm     | Moana 2 PG   | 1hr 40m |              |
|                         | 6.30pm  | <b>Members Screening</b>                                       |         |              |
| Mon 30                  | 12.15pm | Transformers One PG  | 1hr 44m |              |
|                         | 3.30pm  | Moana 2 PG   | 1hr 40m | HOH          |
|                         | 7pm     | Wicked PG  | 2hr 40m | HOH          |
| Tue 31                  | 5pm     | <b>New Year's Eve Pajama Party</b>                             |         | Doors 4pm    |
| <b>JANUARY / IONAWR</b> |         |  |         |              |
| Wed 1                   | 12pm    | Moana 2 PG   | 1hr 40m | Relaxed      |
|                         | 3.30pm  | Wicked PG  | 2hr 40m | Relaxed      |
|                         | 7.30pm  | Red One 12A  | 2hr 3m  |              |
| Thu 2                   | 12.15pm | Transformers One PG  | 1hr 44m |              |
|                         | 3.30pm  | Moana 2 PG   | 1hr 40m |              |
|                         | 7pm     | Wicked PG  | 2hr 40m |              |



## André Rieu's 2024 Christmas Concert: Gold and Silver

Saturday 7th December at 3pm  
 Tickets £12.50/Seniors £10.50/  
 Under 25s £8  
 25% Discount off standard ticket  
 for Members

Celebrate the holiday season with André Rieu's dazzling Christmas Concert, "Gold and Silver," exclusively in cinemas! This magical event embodies the festive spirit of Christmas, bringing joy, warmth, and sparkle to the big screen.

**Dathlwlch yr ŵyl gyda Chyngerdd Nadolig ysblennydd André Rieu, "Gold and Silver," mewn sinemâu yn unig! Mae'r digwyddiad hudol hwn yn cwmpasu ysbryd y Nadolig, gan ddod â llawenydd, cynhesrwydd a sglein i'r sgrin fawr.**



## Abergynolwyn Silver Band/ Seindorf Arian Abergynolwyn

Sunday 8th December at 4pm  
 All tickets £6



## CBeebies Christmas Panto

Saturday 14th December  
 Tickets £7.50/ Members £6 (*£1 discount when booking 24 hours in advance*)

Experience the magic of this year's CBeebies Christmas Show, Beauty and the Beast, on the BIG CINEMA SCREEN, with additional Exclusive Content featuring your favourite CBeebies stars! The show will be sprinkled with plenty of CBeebies magic, festive music, stunning dance performances and a star cast of CBeebies presenters and on-screen talent, making it an engaging theatrical spectacle for all the family.

**Profwch hud Sioe Nadolig CBeebies, Beauty and the Beast eleni, ar SGRIN FAWR Y SINEMA, gyda Chynnwys Unigryw ychwanegol yn cynnwys eich hoff sêr CBeebies! Bydd y sioe yn cael ei thaenu â digon o hud CBeebies, cerddoriaeth Nadoligaidd, perfformiadau dawnysyfrdanol a chast o gyflwynwyr CBeebies a thalent ar y sgrin, gan ei gwneud yn olygfa theatrig ddeniadol i'r teulu cyfan.**

We are delighted to be welcoming the fantastic Seindorf Arian Abergynolwyn/ Abergynolwyn Silver Band to The Lantern. This will be a perfect afternoon to get everyone in the Christmas spirit.

**Mae'n bleser gennym groesawu Seindorf Arian Abergynolwyn/Abergynolwyn Silver Band i The Lantern. Prynhawn perfffaith i bawb gael mwynhau ysbryd y Nadolig.**

## QUIZ NIGHT

Ian & Claire Hughes's Tuesday night quizzes are legendary! Quiz starts at 9pm every Tuesday, with doors at 8:30pm. Cost is £1 per player. Everyone is very welcome - come early to get a table in the bar as we may have to spread out to tables in the main hall.

Wherever you are you will have a great night!

**Mae nosweithiau cwis nos Fawrth Ian a Claire Hughes yn enwog! Mae'r cwis yn dechrau m 9pm bob nos Fawrth, gyda'r drysau'n agor am 8.30pm. Y pris yw £1 y pen. Mae croeso i bawb - dewch yn gynnar i gael bwrdd wrth y bar gan y bydd hi'n bosibl y byddwn yn gorfod gosod byrddau yn y brif neuadd. Ble bynnag y byddwch, fe gewch noson wych!**



Andrew Lloyd Webber's The Phantom of The Opera is a worldwide entertainment phenomenon. It has been staged in 145 cities across 27 countries and its box office sales eclipse Avatar, Titanic and Star Wars. To celebrate its 25th Anniversary year, Cameron Mackintosh presented The Phantom of The Opera in a fully-staged, lavish production set in the sumptuous Victorian splendour of the Royal Albert Hall!

## Phantom of the Opera

Saturday 28th December  
 Tickets Tickets  
 £12.50/£10.50 Members  
 £9.50 Under 25 £8

**Mae The Phantom of the Opera gan Andrew Lloyd Webber yn ffenomenon adloniant byd-eang. Mae wedi'i lwyfannu mewn 145 o ddinasoedd ar draws 27 o wledydd a'i werthiant swyddfa docynnau yn rhagori ar Avatar, Titanic a Star Wars. I ddathlu ei ben-blwydd yn 25 oed, cyflwynodd Cameron Mackintosh The Phantom of the Opera mewn cynhyrchiad moethus llwyfan llawn wedi'i osod yn ysblander Fictoriaidd godidog Neuadd Frenhinol Albert!**



## Members Screening

Sunday 29th December  
**Free to Members**

This is a special free event for our Members! Join us on the last Sunday of the month for a free event including a film screening. There will be an opportunity to meet other members plus members of The Magic Lantern team.

Have a drink and a chat and then find out about what we have planned for the month ahead and then watch a film. We have more members than seats so although this is a free event, booking in advance is essential!

**Mae hwn yn ddigwyddiad arbennig, am ddim, i'n haelodau! Ymunwch â ni ar ddydd Sul olaf y mis ar gyfer digwyddiad am ddim yn cynnwys dangos ffilm. Bydd cyfle i gwrdd ag aelodau eraill yn ogystal ag aelodau o'r tîm Llusern Hud. Cymerwch ddi-od a sgwrsiwch, a gweld beth sydd gennym wedi ei drefnu ar gyfer y mis i ddod cyn gwyllo ffilm. Mae gennym fwy o aelodau na sydd o seddau felly, er bod hwn yn ddigwyddiad am ddim, mae'n hanfodol archebu lle ymlaen llaw!**



# New Year's Eve **Pyjama Party**



## Book now for our very special New Year's Eve Celebration for kids.

Midnight is a long time to stay up till when you're little but we don't see why kids need to miss out on all the excitement of the NYE Countdown and Fireworks!

After all - it's Midnight somewhere....and at The Magic Lantern, midnight occurs at around 7.15pm! Kids can come in their Pyjamas, we'll tire them out for you, see in the 'New Year' and you can have them back home and in bed by 8pm!



This year's film is Paddington in Peru, a perfect film for all the family.

Come from 4pm and enjoy crafts and games.

At around 5pm it's time to settle down with your popcorn and treats and enjoy the film and after the film we will go 'LIVE' to LONDON for the New Year Countdown!! Fireworks and Disco until 7.30pm when you can then take your exhausted little ones home to bed.

**Booking ESSENTIAL!**

## Archebwch nawr ar gyfer ein Dathliad Nos Galan arbennig iawn i blant.

Mae hanner nos yn amser hir i aros i fyny tan pan fyddwch chi'n fach ond nid ydym yn gweld pam mae angen i blant golli allan ar holl gyffro'r NYE Countdown a than gwylt!

Wedi'r cyfan, mae'n hanner nos yn rhywle... ac yn Y Llusern Hud, mae hanner nos yn digwydd tua 7.15pm! Gall plant ddod yn eu Pyjamas, byddwn yn eu blino allan i chi, gweld yn y 'Flwyddyn Newydd' a gallwch eu cael yn ôl adref ac yn y gwely erbyn 8pm!



Y ffilm eleni yw Paddington ym Mheriw, ffilm berffaith i'r teulu cyfan.

Dewch o 4pm ymlaen a mwynhau crefftau a gemau.

Am 5pm mae'n bryd setlo i lawr gyda'ch popcorn a'ch danteithion a mwynhau'r ffilm ac ar ôl y ffilm byddwn yn mynd 'LIVE' i LLUNDAIN ar gyfer y Flwyddyn Newydd Countdown!! Tân gwylt a Disgo tan 7.30pm pan allwch chi fynd â'ch rhai bach sydd wedi blino'n lân adref i'r gwely.

**Archebu Hanfodol!**

# Saturday Night **Theatre**

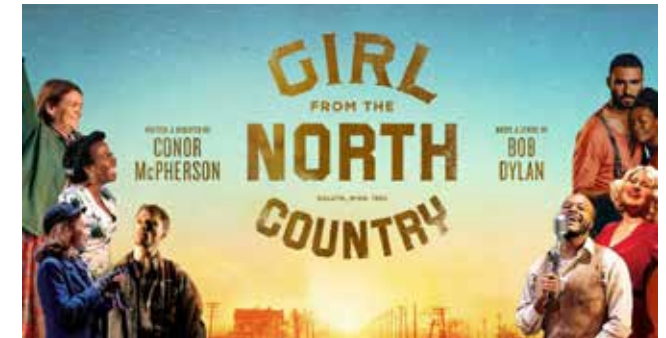
Next year we will have at least one recorded theatre show every month and we will be making it an extra special theatre experience, with theatre suppers (must be booked in advance), special cocktails and interval ice creams!

Here's what's coming up.

## Girl from North County

Saturday 25th January

at 7.30pm. Doors 6pm  
Experience this profoundly beautiful Broadway production brought to vivid life by an extraordinary company of actors and musicians.



## Macbeth

Saturday 8th February

at 7.30pm. Doors 6pm  
David Tennant and Cush Jumbo lead a stellar cast in a new production of Shakespeare's Macbeth, filmed live at the Donmar Warehouse in London, especially for the big screen.



## Misérables: The Staged Concert Live! (40th Anniversary)

Saturday 22nd February

at 7.30pm. Doors 6pm  
Filmed in 2019 at the Gielgud Theatre with a cast of Michael Ball, Alfie Boe, Matt Lucas and more.



Y flwyddyn nesaf bydd gennym o leiaf un cynhyrchiad theatr bob mis a byddwn yn ei wneud yn brofiad theatr arbennig ychwanegol, gyda swper theatr (rhaid archebu ymlaen llaw), coctels arbennig a hufen iâ cyfwng!

Dyma beth sydd i ddod.



## Food, Fun, Film and Friendship.

As usual the Lantern will be opening its doors on Christmas Day for anyone who would like to spend Christmas with their community! You can come along all day, pop in for a drink and a mince pie, join us for lunch or just come to watch the film. The choice is yours and it's all free - just be sure to book a ticket so we know how many to cater for!

Funded by community donations and run by volunteers. If you would like to volunteer or make a donation please email [saramagiclantern@gmail.com](mailto:saramagiclantern@gmail.com)

## Christmas Presence



## Nadolig Nes



## Bwyd, Hwyl, Ffilm a Chyfeillgarwch.

Yn ôl yr arfer bydd y Llusern yn agor ei ddrysau ar Ddydd Nadolig i unrhyw un a hoffai dreulio'r Nadolig gyda'u cymuned! Cewch aros drwy'r dydd, galw heibio am ddiod a mins pei, ymuno â ni am ginio neu alw i wyllo'r ffilm. Mae'r dewis yn eich dwylo chi ac mae'r cyfan am ddim - cofiwch archebu tocyn fel ein bod yn gwybod faint o fwyd sydd ei angen!

Yn cael ei hariannu gan roddion cymunedol ac yn cael ei rhedeg gan wirfoddolwyr. Os hoffech wirfoddoli neu os hoffech roi cyfraniad anfonwch e-bost at [saramagiclantern@gmail.com](mailto:saramagiclantern@gmail.com)





# Friday Night is **Music Night**

Every Friday night we have live music in the bar. It's always fabulous and always FREE!

Friday 6th December  
**Open Mic Night**



The Open Mic Nights have been running at the Lantern since 2011 and they're a highlight of the month, celebrating our brilliant local music scene. Please email us to book a performer slot - all musical styles welcome.

**Mae'r Nosweithiau Meic Agored wedi cael eu cynnal yn y Llusern ers 2011, a dyma uchafbwynt y mis, sy'n dathlu ein sîn gerddoriaeth leol ragorol. Anfonwch e-bost atom i drefnu slot perfformiwr - mae croeso i bob arddull cerddorol.**

**Mae gennym gerddoriaeth fyw yn y bar, bob nos Wener. Noson wych, am ddim, bob amser.**

Friday 13th December  
**The Dyfies**



Simon & Janine of the Dyfies are Open Mic Night regulars. They play a true variety of eclectic and beloved music, from covers of Lou Reed and Pink Floyd, to original material from present day performed primarily on acoustic guitar, flute and vocals.

**Mae Simon a Janine o'r Dyfies yn selogion Noson Meic Agored. Maent yn chwarae amrywiaeth go iawn o gerddoriaeth eclectic a hoff, o ganeuon Lou Reed a Pink Floyd, i ddeunydd gwreiddiol o'r presennol a berfformir yn bennaf ar gitâr acwstig, fflwt a llais.**

**It's FREE ENTRY for the Live Bands after the film!**

# Friday Night is **Music Night**

Friday 20th December  
**The Magic Lantern Band**



Don't miss a night of music with our incredible house band - it will be a fun & relaxed night of live music at MLB's home spot! Haven't seen MLB play before? Join us for a soulful, groovy, dynamic set made up of original compositions and eclectic covers - resulting in a genre-fusing, funky and sometimes psychedelic soundscape.

**Peidiwch â cholli noson o gerddoriaeth gyda'n band tŷ anhygoel - bydd hi'n noson hwyliog a hamddenol o gerddoriaeth fyw yng nghartref MLB! Heb weld MLB yn chwarae eto? Ymunwch â ni ar gyfer set eneidol, grwfi, deinamig sy'n cynnwys cyfansoddiadau gwreiddiol a chaneuon eclectic gan grwpiau eraill - gan arwain at seinwedd sy'n cyfuno genre, yn ffyni ac weithiau'n seicedelig.**

The **Magic Lantern Band's** 6 track EP '**Sunrays**' is now available for purchase! You can buy either a digital download for £7 or a physical CD for £10 (+£2 P&P). The songs are our own compositions, each with their own unique flavour, but all with a signature MLB feel.



Friday 27th December  
**Tongue & Groove's  
Final Goodbye**



We are simultaneously so saddened but honoured to host the absolutely wonderful, groovy, gutsy, funny, talented, iconic Tongue & Groove for their final swan song gig this December. For years this band has provided countless wonderful memories and musical magic to the whole community, particularly to us all at the Magic Lantern. Let's give this amazing outfit the send off they deserve, on Friday 27th December.

**Perfformiad Olaf Tongue & Groove**  
**Rydym mor drist ond yn ei themlo hi'n anrhydedd ar yr un pryd cael croesawu'r Tongue & Groove cwbl wych, grwfi, dewr, doniol, talentog, eiconig ar gyfer eu gig olaf ym mis Rhagfyr. Ers blynnyddoedd mae'r grŵp hwn wedi creu atgofion gwych di-rif a hud cerddorol i'r gymuned gyfan, yn enwedig i ni yn y Llusern Hud. Gadewch i ni roi'r ffarwel olaf haeddiannol iddynt, ddydd Gwener 27 Rhagfyr.**

## Please consider becoming a Member of The Magic Lantern.

Annual Memberships give you a great range of benefits and really help support the day to day upkeep of the cinema.

### Benefits of Membership:

- £2 discount on all standard film tickets.
- 25% discount on all special events tickets.
- 10% discount off our shop items.
- Advance booking for special events
- Free Members social event on the last Sunday of every month including a film screening!

You can call in to the box office, phone us or buy your membership online - click the SHOP tab and then select memberships.

Prices are:

- Adult £30
- Seniors £25
- Child £15

## Beth am ystyried dod yn Aelod o'r Llusern Hud.

Mae Aelodaeth Flynyddol yn rhoi dewis gwydych o fanteision i chi, a wirioneddol yn helpu i gefnogi gwaith cynnal a chadw dyddiol y sinema.

### Manteision Aelodaeth:

- Gostyngiad o £2 ar bob tocyn ffilm safonol.
- Gostyngiad o 25% ar bob tocyn ar gyfer digwyddiadau arbennig.
- Gostyngiad o 10% ar yr eitemau yn ein siop.
- Archebu ymlaen llaw ar gyfer digwyddiadau arbennig
- Digwyddiad cymdeithasol am ddim i Aelodau ar ddydd Sul olaf bob mis, sy'n cynnwys sgrinio ffilm!

Gallwch alw heibio'r swyddfa docynnau, ein ffonio, neu brynu eich aelodau ar-lein - cliciwch y tab SHOP, ac yna dewiswch eich aelodaeth.

### Prisiau:

- Oedolyn £30
- Hŷn £25
- Plentyn £15

## Christmas Shopping at The Lantern

We have lots of ideas for great Christmas gifts this year - film related board games and gifts and posters plus we have Magic Lantern Gift Vouchers plus Memberships make a wonderful year long gift!

### Gifts



Movie Mayhem Board Game..... £19.99



Movie Bucket List Scratch Cards..... £9.99  
Movie Night Coupons..... £5.99  
Movie Trivia Cards..... £4.99



Vinyl Coasters..... £9.99  
100 Movies Scratchbook..... £24.99  
100 Bucket List Movies Posters..... £12.99



## Magic Lantern Merchandise

Magic Lantern Mugs..... £5



Magic Lantern Postcard..... £1  
Magic Lantern Beanies..... £8



Magic Lantern Hoodies..... £25

## Games

Uno Minecraft..... £12.99  
Splendor Marvel..... £38.99  
Smash Up Marvel..... £34.99



Munchkin Marvel & Disney..... £29.99

## Siopa Nadolig yn The Lantern

Mae gennym ni lawer o syniadau ar gyfer anrhegion Nadolig gwydych eleni - gemau bwrdd, anrhegion a phosteri yn ymwneud â ffilmiau, yn ogystal â Thalebau Rhodd Magic Lantern, ac mae Aelodaeth yn anrheg wych i bara blwyddyn gyfan!

Pandemic Star Wars..... £59.99



Harry Potter Hogwarts Battle..... £49.99



Dobble Pixar..... £15.99

Dixit Disney..... £32.99



Codenames Disney..... £24.99

Brain Box Harry Potter..... £15.00





# BOX OFFICE OPENING TIMES

**If you book 24 hours in advance  
you can save money!**

Call in or phone the Box Office:

|           |                          |
|-----------|--------------------------|
| Monday    | - 11am – 1pm / 6pm - 9pm |
| Tuesday   | - 6pm – 8pm              |
| Wednesday | - 3pm – 9pm              |
| Thursday  | - 3pm – 8pm              |
| Friday    | - 6pm – 10pm             |
| Saturday  | - 4pm – 9pm              |
| Sunday    | - 3pm – 6pm              |

Book online at  
[www.tywyncinema.co.uk](http://www.tywyncinema.co.uk)  
Telephone: **01654 710260**



## Parking

There are 3 general and two disabled parking bays directly in front of the cinema and several parking spaces across the road and next to the Corbett Hotel. You can also find two free car parking areas on Ffordd Gwalia, the road directly between the cinema and St Cadfan's Church.

## Dogs

If your dog will sit quietly throughout the film you are welcome to bring them, on their lead, in the STALLS but not on the balcony. However, if your dog starts to cause a disruption, you will need to remove them, without any associated refund.

## Prices

Book 24 hours in advance, online, over the phone or at the Box Office to receive a £1 discount on all tickets.

|                          |              |
|--------------------------|--------------|
| Standard Adult (15 - 60) | <b>£8.50</b> |
| Members                  | <b>£6.50</b> |
| Child (1 - 14)           | <b>£7.50</b> |
| Senior (60+)             | <b>£7.50</b> |

# ORIAU AGOR Y SWYDDFA DOCYNNAU

**Os ydych yn archebu 24 awr  
ymlaen llaw gallwch arbed arian!**

**Gallwch i mewn neu ffoniwch y Swyddfa Docynnau:**

|              |                          |
|--------------|--------------------------|
| Dydd Llun    | - 11am – 1pm / 6pm - 9pm |
| Dydd Mawrth  | - 6pm – 8pm              |
| Dydd Mercher | - 3pm – 9pm              |
| Dydd Iau     | - 3pm – 8pm              |
| Dydd Gwener  | - 6pm – 10pm             |
| Dydd Sadwrn  | - 4pm – 9pm              |
| Dydd Sul     | - 3pm – 6pm              |

Archebwch ar-lein yn  
[www.tywyncinema.co.uk](http://www.tywyncinema.co.uk)  
Ffôn: **01654 710260**



## Parcio

**Ceir tri man parcio cyffredinol a dau ar gyfer pobl  
anabl yn union o flaen y sinema, ynghyd â nifer o  
fannau parcio dros y ffordd, y drws nesaf i Westy'r  
Corbett Hotel. Gallwch ddod o hyd i ddau fan parcio  
am ddim ar Ffordd Gwalia hefyd, sef y ffordd sy'n  
union rhwng y sinema ac Eglwys Sant Cadfan.**

## Cŵn

**Os bydd eich ci yn eistedd yn dawel drwy gydol y  
ffilm, mae croeso ichi ddod ag ef gyda chi, ar den-  
nyn. Cewch eistedd yn y seddi ar y llawr gwaelod,  
ond ni chewch eistedd ar y balconi. Ond pe bai eich  
ci yn dechrau cynhyrfu, bydd angen ichi ei dywys  
o'r sinema, heb unrhyw ad-daliad cysylltiedig.**

## Prisiau

**Archebwch 24 awr ymlaen llaw, ar-lein, dros  
y ffôn neu yn y Swyddfa Docynnau i dderbyn  
gostyngiad o £1 ar bob tocyn.**

|                           |              |
|---------------------------|--------------|
| Oedolyn Safonol (15 - 60) | <b>£8.50</b> |
| Aelodau                   | <b>£6.50</b> |
| Plentyn (1 - 14)          | <b>£7.50</b> |
| Hŷn (60+)                 | <b>£7.50</b> |



Magic Lantern Cinema Ltd  
Corbett Square, Tywyn,  
Gwynedd LL36 9DF  
Telephone: 01654 710260