

TYWYN
THE MAGIC LANTERN
CINEMA

July 2026

Gorfennaf 2026



FILMS • LIVE MUSIC • THEATRE • SPECIAL EVENTS

FFILMAU • CERDDORIAETH FYW • THEATR • DIGWYDDIADAU ARBENNIG



Scan the QR code to visit our website



Table of Contents Tabl Cynnwys

Films Showing

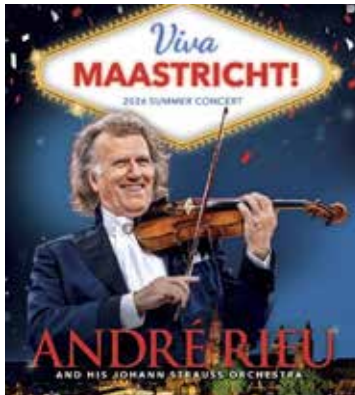
500 Miles	6
Backrooms	4
Disclosure Day	4
Effi O Blaenau	7
Eldra	18
Familiar Touch	6
Masters of the Universe	4
Michael	5
Minions & Monsters	9
Moana	8
Obsession	5
Savage House	5
Star Wars: The Mandalorian & Grogu	9
Supergirl	8
The Last Viking	7
The Odyssey	5
The Sheep Detectives	8
Toy Story 5	8
Iaith i Bawb	18
Listings	12-13
Music Nights	16-17
125 Years of The Magic of Film in Tywyn	14-15
Throwback Thursdays	
Butch Cassidy & The Sundance Kid	15
Casablanca	14
Singin' in the Rain	15
The Poseiden Adventure	15
Regular Events	
Film Club	19
Gaming on the Big Screen	19
Quiz Night	19
Theatre On Screen	
Rev. W Awdry: The Thomas the Tank Engine Man	20
Wright & Grainger's Selene	20

Dates for your Diary

Moana Singalong Party Sunday 2nd August



André Rieu's 2026 Concerts Viva Maastricht! Sunday 9th and Sunday 16th August



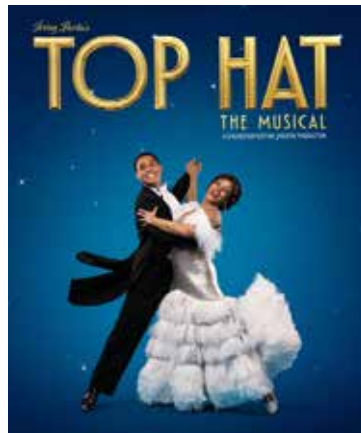
Theatre on Screen Funny Girl Saturday 22nd August



Welsh Learners Day Saturday 5th September



Theatre on Screen Top Hat Saturday 12th September



Skyfall Saturday 19th September



Become a Member

If you would like to support the Magic Lantern and save yourself £2 every time you come to see a film, why not become a member.

Os hoffech chi gefnogi'r Llusern Hud ac arbed £2 i'ch hun bob tro y dewch i weld ffilm, beth am ddod yn aelod?

Membership cost

Adult	£30
Senior	£25
Child	£15

Cost Aelodaeth

Oedolyn	£30
Hŷn	£25
Plentyn	£15

Benefits of Membership

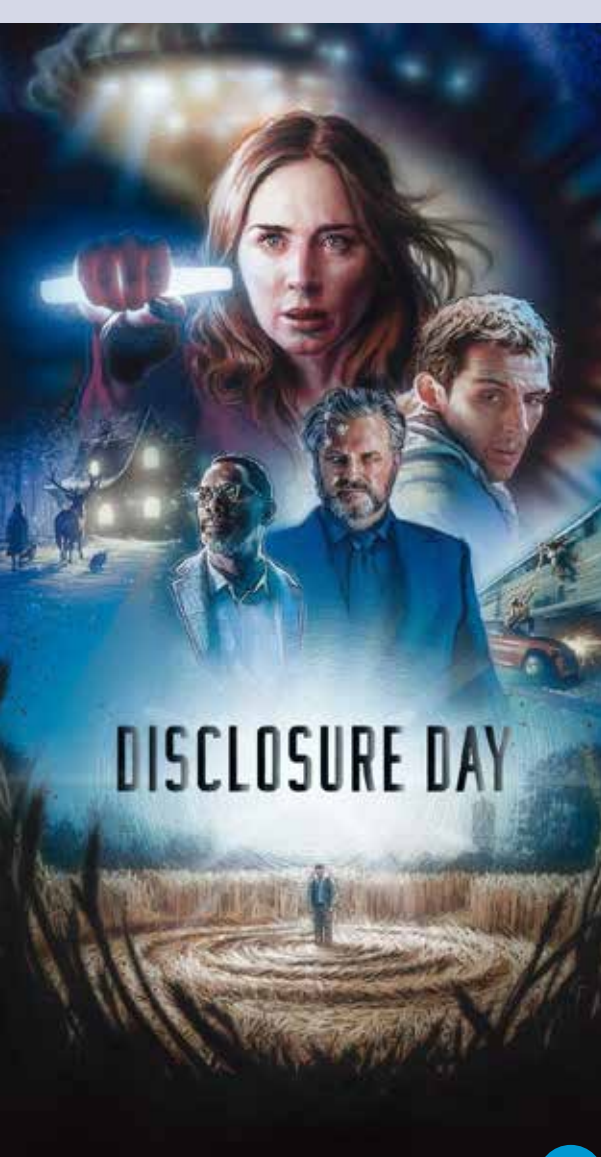
- £2 discount on film tickets
- 25% discount on special event tickets
- 10% discount on Magic Lantern Merchandise
- 1 free ticket per month which can be used to see any one of our Lantern Loves selection

Manteision Aelodaeth

- Gostyngiad o £2 ar docynnau ffilm
- Gostyngiad o 25% ar docynnau digwyddiadau arbennig
- Gostyngiad o 10% ar Nwyddau'r Llusern Hud
- 1 tocyn am ddim y mis i'w ddefnyddio i weld unrhyw un o Argymhellion y Llusern

Members Night on the last Sunday of the month – a chance to meet other members, chat with the team, listen to recommendations for upcoming films and events, find out about our plans and tell us what you want from the cinema. Plus a chance to watch the programmers trailer list for future months and give us your feedback!

Noson yr Aelodau ar ddydd Sul olaf y mis – cyfle i gwrdd ag aelodau eraill, sgwrsio gyda'r tîm, gwranddo ar argymhellion fffilmiau a digwyddiadau sydd ar y gweill, darganfod mwy am ein cynlluniau a dweud wrthym am bethau rydych eisiau eu gweld yn y sinema. Hefyd cyfle i wyllo rhestr rhagluniau'r rhaglennwyr ar gyfer y misoedd i ddod a rhoi eich adborth i ni!



Disclosure Day

12A 2hr 25m

YA
DS AD

Genre: Sci-Fi, Conspiracy Thriller

If you found out we weren't alone, if someone showed you, proved it to you, would that frighten you? Emily Blunt & Colin Firth star in this Spielberg epic.

Petaech chi'n darganfod nad oedden ni ar ein pennau ein hunain, petai rhywun yn ei ddangos i chi, yn ei brofi i chi, a fyddai hynny'n eich dychryn chi? Mae Emily Blunt a Colin Firth yn serennu yn y ffilm epig yma gan Spielberg.



Masters of the Universe

12A 2hr 20m

DS AD

Genre: Action, Adventure, Fantasy, Sci-Fi

I have the POWER! Who fondly remembers He-Man? Now you have the chance to see him in real life!! Sort of... A young man on Earth discovers a fabulous secret legacy as the prince of an alien planet, and must recover a magic sword and return home to protect his kingdom.

"I have the POWER! Pwy sy'n cofio He-Man? Nawr mae'r cyfle gennych i'w weld go iawn!! Wel, ddim cweit... Mae dyn ifanc ar y Ddaear yn darganfod etifeddiaeth gyfrinachol anhygoel fel tywysog planed estron, ac mae'n rhaid iddo ganfod y cleddyf hud a dychwelyd adref i warchod ei deyrnas.



Backrooms

15 1hr 50m

MM
DS

Genre: Psychological Thriller

After a therapist's patient disappears into a dimension beyond reality, she must venture into the unknown to save him. A24's most successful film so far!

Ar ôl i glaf therapydd ddfilannu i ddimensiwn y tu hwnt i realiti, rhaid iddi fentro i'r anhysbys i'w achub. Ffilm fwyaf llwyddiannus A24 hyd yn hyn!



Savage House

15 1hr 53m

GA
DS AD

Genre: Comedy, Drama

Set in 18th century England during the pox outbreak and Jacobite uprising, Sir Chauncey (Richard E Grant) and Lady Savage (Claire Foy) blindly pursue a better life, their pursuit filled with ironic decadence and bloodshed. A darkly satirical play on class and power.

Wedi'i osod yn Lloegr yn y 18fed ganrif yn ystod achosion o'r frech a gwrthryfel y Jacobitiaid, mae Syr Chauncey (Richard E Grant) a Lady Savage (Claire Foy) yn mynd ar drywydd bywyd gwel yn ddi-glem. Mae eu hymgais yn llawn dirywiad eironig a thywallt gwaed. Drama ddychanol a thywyll ar ddsbarth a grym.



The Odyssey

15 2hr 52m

DS AD

Genre: Fantasy, Adventure, Drama

After the Trojan War, Odysseus faces a dangerous voyage back to Ithaca, meeting creatures like the Cyclops Polyphemus, Sirens, and Calypso along the way.

Ar ôl Rhyfel Troea, mae Odysseus yn wynebu taith beryglus yn ôl i Ithaca, gan gwrrd â chreaduriaid fel y Cyclops Polyphemus, Sirens, a Calypso ar hyd y ffordd.



Obsession

18 1hr 48m

DS AD

Genre: Psychological Thriller

After breaking the mysterious "One Wish Willow" to win his crush's heart, a hopeless romantic finds himself getting exactly what he asked for but soon discovers that some desires come at a dark, sinister price.

Ar ôl torri'r 'Helygen Un Dymuniad' ddirgel er mwyn swyno merch mae'n ei hoffi, mae rhamantydd anobeithiol yn cael yr union beth y gofynnodd amdano, ond cyn hir mae'n darganfod bod rhai dyheadau yn dod gyda phris sinistr, tywyll.



Michael

12A 2hr 7m

DS AD

Genre: Biography, Drama, History, Music

Discover the story of one of the most influential artists the world has ever known, and his life beyond the music, tracing his journey from the discovery of his extraordinary talent, to being known as The King Of Pop.

Darganfyddwch stori un o'r artistiaid mwyaf dylanwadol y mae'r byd erioed wedi'i adnabod, a'i fywyd y tu hwnt i'r gerddoriaeth, gan olrhain ei daith o ddarganfod ei dalent ryfeddol, i gael ei adnabod fel Brenin Pop.

These films come with recommendations from members of The Magic Lantern Team. They are less well-known films that might not always get the attention and publicity they deserve but we love them and think you will too.

Members can use their monthly free ticket to see any one of these 4 films.

Daw'r ffilmiau hyn gydag argymhellion aelodau o Dîm y Lusern Hud. Maent yn ffilmiau llai adnabyddus nad ydynt bob amser yn cael y sylw a'r cyhoeddusrwydd y maent yn ei haeddu, ond rydym wrth ein bodd â nhw ac yn meddwl y byddwch chithau hefyd.

Gall aelodau ddefnyddio eu tocyn misol am ddim i weld unrhyw un o'r 4 ffilm yma.



Familiar Touch

12A 1hr 30m



Genre: Drama

Recommended by Sara

An octogenarian woman transitions to life in assisted living as she contends with her conflicting relationship to herself and her caregivers amidst her shifting memory, age, identity and desires.

"A very affecting and moving drama that shows the effects of dementia from the viewpoint of the person living with it. Sad but not mawkish, I really recommend this film to everyone to get a sense of what living with dementia might be like. This film was shot in a real care facility and most of the staff on screen and residents really do live and work in that home"

Mae menyw wythdeg oed yn trawsnewid i fywyd mewn cyfleuster byw â chymorth, wrth iddi ymdopi â'i pherthynas wrthgyferbyniol â hi ei hun a'i gofalwyr yng nghanol ei chof newidiol, ei hunaniaeth, ei hoedran a'i dymuniadau.

"Drama deimladwy a gwefreiddiol sy'n dangos effeithiau dementia o safbwynt yr unigolyn sy'n byw gyda'r cyflwr. Yn drist ond nid yn ddagreuol, rwy'n argymhell y ffilm yma i bawb i gael syniad o sut beth fyddai byw gyda Dementia. Cafodd ei ffilmio mewn cyfleuster gofal go iawn, ac mae'r rhan fwyaf o'r staff ar y sgrin a'r preswylwyr wir yn byw ac yn gweithio yn y cartref yna."



500 Miles

12A 1hr 42m



Genre: Drama

Recommended by Sara

Two brothers run away from home in England to reach their estranged grandfather (Bill Nighy) on Ireland's west coast.

"Anything with the sublime Bill Nighy is always worth watching and as always, he is captivating in every scene. However, the stars of this story are the two young boys. Delightful performances and a beautiful story."

Mae dau frawd yn rhedeg i ffwrdd o gartref yn Lloegr i gyrraedd eu taid (Bill Nighy) sydd wedi ymddieithrio oddi wrthynt, ar arfordir gorllewinol Iwerddon.

"Mae unrhyw beth gyda'r actor godidog, Bill Nighy, bob amser yn werth ei wyllo ac fel bob amser, mae'n hudolus ym mhob golygfa. Fodd bynnag, sêr y stori yma yw'r ddau fachgen ifanc. Perfformiadau hyfryd a stori brydferth."



The Last Viking

15 1hr 56m



Genre: Danish, Dark Comedy, Crime, Drama
English Subtitles

Recommended by Rowan and Sara

A bank robber released from jail must unlock his traumatised brother's memory to recover stolen loot. This was Rowan's & Sara's favourite film of a recent screening weekend.

"As laugh out loud funny as it is tear-jerking, as sweet and tender as it is eye wateringly violent. This film has everything!"

Rhaid i leidr banc sydd wedi cael ei ryddhau o'r carchar ddatgloi cof ei frawd sydd wedi wynebu trawma mawr, i adennill ysbail wedi'i ddwyn. Dyma oedd hoff ffilm Rowan a Sara yn ystod penwythnos diweddar o ddangosiadau.

"Mi wnewch chi chwervthin nerth eich pen a cholli deigrin, mae'n hyfryd a thyner ond hefyd yn dreisgar tu hwnt. Mae gan y ffilm yma bopeth!"



Effi o Blaenau

15 1hr 54m

Genre: Drama

Welsh with English Subtitles

Recommended by Rowan and Sara

One of our favourite films of the year. This is a fantastic film set in Blaenau Festiniog and featuring an incredible performance by Leisa Gwenllian.

"The film takes you on a roller coaster of emotions and you never know quite where it is going so we don't want to say much about the plot. Trust us though - it is a captivating, moving and very honest, believable film"

Un o'n hoff ffilmiau ni eleni. Mae hon yn ffilm wych wedi'i lleoli ym Mlaenau Ffestiniog ac yn cynnwys perfformiad anhygoel gan Leisa Gwenllian.

"Mae'r ffilm yn mynd â chi ar daith o emosiynau a dydych chi byth yn gwybod i sicrwydd i ble mae'n mynd, felly dydyn ni ddim eisiau dweud llawer am y plot. Ond coeliwch chi ni - mae'n ffilm gyfareddol, deimladwy, sy'n onest a chredadwy iawn."



Toy Story 5

PG 1hr 42m



Genre: Family, Animated, Adventure
Woody, Buzz, Jessie and the rest of the gang's jobs are challenged when they're introduced to electronics, a new threat to playtime.

Mae swyddi Woody, Buzz, Jessie a gweddill y gang yn y fantol pan gânt eu cyflwyno i electroneg, bygythiad newydd i amser chwarae.

Star Wars: The Mandalorian & Grogu

12A 2hr 12m



Genre: Family, Sci-Fi, Action, Adventure, Fantasy

The evil Empire has fallen but Imperial warlords remain scattered throughout the galaxy. As the fledgling New Republic works to protect everything the Rebellion fought for, they enlist the help of legendary Mandalorian bounty hunter and Grogu.

Mae'r Ymerodraeth ddrwg wedi cwmpo ond mae arglwyddi rhyfel Ymerodrol yn parhau i fod wedi'u gwasgaru ledled yr alaeth. Wrth i'r Weriniaeth Newydd ifanc weithio i amdiffyn popeth y bu'r Gwrthryfel yn ymladd drosto, maen nhw'n gofyn am gymorth yr heliwr gwobrau Mandaloriaidd chwedlonol a Grogu.



The Sheep Detectives

PG 1hr 49m



Genre: Family, Comedy, Mystery
Every night a shepherd reads aloud a murder mystery, pretending his sheep can understand. When he is found dead, the sheep realize at once that it was a murder and think they know everything about how to go about solving it.

Bob nos mae bugail yn darllen tensiwn llofruddiaeth mewn llais uchel, gan wneud fel pe bai ei ddefaid yn gallu deall. Pan gaiff ei ganfod wedi marw, mae'r defaid yn sylweddoli ar unwaith mai llofruddiaeth oedd hi ac yn meddwl eu bod yn gwybod popeth am sut i fynd ati i'w datrys.



Moana

PG 1hr 55m



Genre: Family, Animated, Adventure
Live-action adaptation of the 2016 Disney animated classic that sees the young heroine take to the seas to undo the curse that threatens her people.

Addasiad byw o glasur animeiddiedig Disney 2016, gyda'r arwres ifanc yn mynd i'r moroedd i ddatwneud y felltith sy'n bygwth ei phobl.



Supergirl

12A 1hr 47m



Genre: Superhero, Sci-Fi Adventure
Kara Zor-El, aka Supergirl, joins forces with an unlikely companion on an interstellar journey of vengeance and justice when an unexpected adversary strikes too close to home.

Mae Kara Zor-El, sydd hefyd yn cael ei galw'n Supergirl, yn ymuno â chydymaith annhebygol ar daith ryngserol o ddial a chyfiawnder, pan fydd gwrthwynebydd annisgwyl yn ymosod yn rhy agos at adref.



Minions & Monsters

PG 1hr 30m



Genre: Family, Animated, Comedy
This is the rambunctious, ridiculous and totally true story of how the Minions conquered Hollywood, became movie stars, lost everything, unleashed monsters onto the world and then banded together to try and save the planet from the mayhem they had just created.

Dyma stori afreolus, chwerthinlyd a hollol wir am sut gwnaeth y Minions orchfygu Hollywood, dod yn sêr ffilm, colli popeth, rhyddhau angenfilod i'r byd ac yna dod at ei gilydd i geisio achub y blaned rhag yr anhrefn roeddent newydd ei greu.



Please read, especially if you have accessibility requirements.

DS This means the film will have **Descriptive Subtitles on the screen.**

Descriptive Subtitles show the spoken dialogue while also providing text-based descriptions of important non-dialogue audio, such as music cues and sound effects.

See the listings page to see what screenings will have Descriptive Subtitles on the screen.

DS This means that **Descriptive Subtitles are available on a handset which can be borrowed from the box office.**

Look for this logo next to the film description. If the logo is there, the film has DS on Handsets.

AD This means that the film has **audio description.** You can borrow a headset from us and listen to non-spoken parts of the film being described.

Look for this logo next to the film description. If the logo is there, the film has AD available.

Relaxed

These screenings are open to all and especially for people who may find the usual cinema experience difficult.



The lights on low



The sound is lowered



Talk and move around



Bar open throughout



Descriptive Subtitles when available



Parent & Babies welcome

DF (**Dementia Friendly**)
These screenings are open to all but **designed specifically for people with Dementia.**

They are the same as Relaxed Screenings but we will not play trailers or adverts.

These take place on the last Tuesday of the month and cost £5 per ticket.

MM **Magic Monday**
11am every Monday in term time.
These are RELAXED Screenings and cost just £4.50 per ticket and include a free tea or filter coffee.

LL **Little Lanterneers**
11am every Sunday in term time.
These are family films intended for little ones and are RELAXED. These cost £3.50 per ticket.

GA **Golden Agers**
1pm every Thursday in term time.
Open to all but if you are over 60 the ticket costs £4.50 and includes a free tea or filter coffee.

These screenings will have Descriptive Subtitles (DS) on screen when available

YA **Young Adult**
Screenings 4pm every Wednesday in term time.
Open to all but if you are aged between 12 and 19 your ticket is just £5.50 and includes a free soft drink and a small popcorn.

FC **Film Club**
Look out for FC on our listings.

Film Club screenings are open to all but anyone who wants to can stay behind after the film for an informal and friendly chat led by Mat who will tell you a little bit of additional information about the film. It's a lovely opportunity to chat about what you thought of the film.

Darllenwch, yn enwedig os oes gennych ofynion hygyrchedd.

DS Mae hyn yn golygu y bydd gan y ffilm **Isdeitlau Disgrifiadol ar y sgrin.**

Mae Isdeitlau Disgrifiadol yn dangos y ddeialog ar lafar wrth roi disgrifiadau testun hefyd o sain bwysig nad yw'n ddeialog, fel ciwiau cerddoriaeth ac effeithiau sain.

Ewch i'r dudalen â rhestr o ddangosiadau i weld pa rai sydd ag Isdeitlau Disgrifiadol ar y sgrin.

DS Mae hyn yn golygu bod Isdeitlau **Disgrifiadol ar gael ar set llaw, y gellir ei fenthg o'r swyddfa docynnau.**

Chwiliwch am y logo yma wrth ymyl disgrifiad y ffilm. Os yw'r logo yno, mae gan y ffilm DS ar Setiau llaw.

AD Mae hyn yn golygu bod gan y ffilm **ddisgrifiad sain.** Gallwch fenthg penset gennym a gwranddo ar rannau di-lafar o'r ffilm sy'n cael eu disgrifio.

Chwiliwch am y logo yma wrth ymyl disgrifiad y ffilm. Os yw'r logo yno, mae gan y ffilm AD.

Hamddenol

Mae'r dangosiadau yma ar agor i bawb ac yn enwedig i bobl a allai ganfod y profiad sinema arferol yn anodd.



Mae'r goleuadau'n isel



Mae'r sain wedi'i gostwng



Mae'n iawn siarad a symud o gwmpas



Bar ar agor drwy gydol y dangosiad



Isdeitlau Disgrifiadol pan fyddant ar gael



Croeso i Rieni a Babanod

DF (**Cyfeillgar i Dementia**)
Mae'r dangosiadau yma ar agor i bawb, ond yn benodol ar gyfer pobl â Dementia.

Maen nhw'r un fath â Dangosiadau Hamddenol ond ni fyddwn yn dangos rhagluniau na hysbysebion.

Mae'r rhain yn digwydd ar ddydd Mawrth olaf y mis ac mae'n costio £5 y tocyn.

MM **Magic Monday**
11am bob dydd Llun yn ystod y tymor.
Dangosiadau HAMDDENOL yw'r rhain ac maen nhw'n costio dim ond £4.50 y tocyn ac yn cynnwys te neu goffi wedi'i hidlo am ddim.

LL **Little Lanterneers**
11am bob dydd Sul yn ystod y tymor.
Ffilmiau teuluol yw'r rhain sydd wedi'u hanelu at rai bach ac maent yn HAMDDENOL Mae'r rhain yn costio £3.50 y tocyn.

GA **Golden Agers**
1pm bob dydd Iau yn ystod y tymor.
Yn agored i bawb, ond os ydych chi dros 60 oed mae'r tocyn yn costio £4.50 ac yn cynnwys te neu goffi wedi'i hidlo am ddim.

Bydd gan y dangosiadau yma Isdeitlau Disgrifiadol (DS) ar y sgrin pan fyddant ar gael.

YA **Young Adult**
4pm bob dydd Mercher yn ystod y tymor.
Yn agored i bawb, ond os ydych chi rhwng 12 a 19 oed, dim ond £5.50 yw eich tocyn a bydd yn cynnwys diod ysgafn am ddim a phopcorn bach.

FC **Clwb Ffilm**
Chwiliwch am FC ar ein rhestrau.

Mae dangosiadau Clwb Ffilm ar agor i bawb, ond mae croeso i unrhyw un aros ar ôl y ffilm am sgwrs anffurfiol a chyfeillgar dan arweiniad Mat, a fydd yn rhoi ychydig o wybodaeth ychwanegol wrthy ch am y ffilm. Mae'n gyfle hyfryd i sgwrsio am beth roeddech chi'n ei feddwl o'r ffilm.

July Programme

Please see website for full film details and trailers

Cymerwch gip ar ein gwefan i weld manylion llawn y ffilmiau a chipolwg ohonynt

Rhaglen Gorfennaf

Date	Run Time	Film / Event	Access	Screening Type
Wed 1	4pm - 6.30pm 8pm - 10.30pm	Star Wars: The Mandalorian & Grogu 12A Star Wars: The Mandalorian & Grogu 12A		Young Adult
Thu 2	1pm - 3.05pm 7.30pm - 8.45pm	The Sheep Detectives PG Wright & Grainger's Selene 15	DS	Golden Agers Live Theatre
Fri 3	7.30pm	Friday Night is Music Night - The Ultimate Open Mic Night (Doors 7pm)		
Sat 4	4pm - 6.40pm 8pm - 10.05pm	Disclosure Day 12A Backrooms 15		
Sun 5	11am - 1.05pm 3pm - 4.45pm 6pm - 8.40pm	The Sheep Detectives PG Familiar Touch 12A Disclosure Day 12A	Relaxed / DS	Little Lanterneers
Mon 6	11am - 1.05pm 3pm - 4.45pm 7pm - 9.40pm	Backrooms 15 Familiar Touch 12A Disclosure Day 12A	Relaxed / DS DS DS	Magic Monday Film Club
Tue 7	12pm - 2.40pm 5.15pm - 7.55pm 9pm	Disclosure Day 12A Disclosure Day 12A Quiz Night (Doors 8.30pm)		
Wed 8	4pm - 6.40pm 8pm - 9.45pm	Disclosure Day 12A Effi o Blaenau 15 Welsh with English subtitles		Young Adult
Thu 9	1pm - 2.45pm 6pm	Familiar Touch 12A Casablanca PLUS Piano Bar U	DS	Golden Agers 125 - Throwback Thursdays
Fri 10	10am - 11.45pm 6pm - 8.10pm 9pm	Eldra U Welsh with English subtitles Ysgol Pen Y Bryn Takeover! The Last Viking 15 Danish with English subtitles Friday Night is Music Night - Live Music with Tai Shan & Erica Olsen (Doors 8.30pm)		Iaith I Bawb
Sat 11	3pm - 4.45pm 6pm - 8.35pm	500 Miles 12A Masters of the Universe 12A		Afternoon Tea
Sun 12	11am - 1.05pm 2.30pm - 4.40pm 6pm - 7.45pm	The Sheep Detectives PG Savage House 15 500 Miles 12A	Relaxed / DS	Little Lanterneers Afternoon Tea
Mon 13	11am - 1.10pm 2.30pm - 4.15pm 7pm - 9.35pm	The Last Viking 15 English subtitles 500 Miles 12A Masters of the Universe 12A	Relaxed / DS DS DS	Magic Monday Afternoon Tea
Tue 14	5.45pm - 8pm 9pm	The Last Viking 15 Danish with English subtitles Quiz Night (Doors 8.30pm)		
Wed 15	4pm - 5.35pm 7.30pm - 9.40pm	Eldra U Welsh with English subtitles Savage House 15		Young Adult
Thu 16	1pm - 3.10pm 6pm	Savage House 15 Singin' in the Rain U Plus Live Music from Sammie Mac	DS	Golden Agers 125 - Throwback Thursdays
Fri 17	1.45pm - 3.50pm	Supergirl 12A		Afternoon Tea
Sat 18	10.15am - 12.15pm 1.45pm - 3.50pm	Toy Story 5 PG Supergirl 12A		

Date	Run Time	Film / Event	Access	Screening Type
Sun 19	10.30am - 12.30pm 3pm 6pm	Toy Story 5 PG Rev. W. Awdry: The Thomas the Tank Engine Man Rev. W. Awdry: The Thomas the Tank Engine Man		Live Theatre Live Theatre
Mon 20	10am - 12pm 1pm - 3pm 4.15pm - 6.15pm 7.30pm - 9.35pm	Gaming on the Big Screen Toy Story 5 PG Toy Story 5 PG Supergirl 12A	DS DS	
Tue 21	11.15am - 1.15pm 2.30pm - 4.35pm 5.45pm - 7.50pm 9pm	Toy Story 5 PG The Sheep Detectives PG Supergirl 12A Quiz Night (Doors 8.30pm)		
Wed 22	12.45pm - 2.45pm 4pm - 6.05pm 7.15pm - 9.55pm	Toy Story 5 PG Supergirl 12A Disclosure Day 12A	Relaxed / DS	
Thu 23	11am - 1pm 2.30pm - 4.35pm 6pm	Toy Story 5 PG Supergirl 12A Butch Cassidy & the Sundance Kid PG PLUS Cowboy Night!	Relaxed / DS	125 - Throwback Thursdays
Fri 24	1pm - 3pm 4.15pm - 6pm 9pm	Toy Story 5 PG Minions & Monsters PG Friday Night is Music Night - Live Music with Gig-L (Doors 7.30pm)		
Sat 25	1pm - 2.45pm 4pm - 6pm 7.15pm - 9.55pm	Minions & Monsters PG Toy Story 5 PG Disclosure Day 12A		
Sun 26	12pm - 2pm 3.15pm - 5pm 6.15pm - 8.40pm	Toy Story 5 PG Minions & Monsters PG Michael 15	Relaxed / DS	
Mon 27	10am - 12pm 1pm - 2.45pm 4pm - 6pm 7.30pm - 10.10pm	Gaming on the Big Screen Minions & Monsters PG Toy Story 5 PG Disclosure Day 12A	DS DS DS	
Tue 28	11.45am - 1.30pm 2.45pm - 4.45pm 6pm - 8pm 9pm	Minions & Monsters PG Singin' in the Rain U Toy Story 5 PG Quiz Night (Doors 8.30pm)	DF	Nostalgia Matinee
Wed 29	1.15pm - 3.15pm 4.30pm - 6.15pm 7.30pm - 9.35pm	Toy Story 5 PG Minions & Monsters PG Obsession 18		
Thu 30	11.30pm - 1.15pm 2.30pm - 4.30pm 6pm	Minions & Monsters PG Toy Story 5 PG The Poseidon Adventure PG Plus UV Underwater 70's Disco	Relaxed / DS	125 - Throwback Thursdays
Fri 31	11.45am - 1.55pm 3.30pm - 6.40pm 9pm	Moana PG The Odyssey 15 Friday Night is Music Night - Live Music with The Refreshers (Doors 7.30pm)		

For full details of all 'Access' and 'Screening Type' see pages 10 & 11

DS - Descriptive Subtitles on Screen **DF** - Demetia Friendly

125 years of the **Magic of Film** in Tywyn



We are thrilled to host a full season of events to celebrate the 125th Anniversary of films being shown in our beautiful building.

Tickets for all shows are now on sale!



Throwback Thursdays

Join us as we begin a journey through the decades, celebrating the history, revisiting with nostalgia and reuniting with special characters all the way from the 1940s through to the 2010s!

Dress up, sing, dance, enjoy fun, games and activities. Each event will be different, but all will be very special!

Tickets for all Throwback Thursday events are: Standard £12 Concessions £10 Members £8

All start at 6pm with doors opening at 5pm.

Clasuron Dydd Iau

Ymunwch â ni wrth i ni gychwyn ar daith drwy'r degawdau, gan ddathlu hanes, hiraethu am gyfnod a fu, ac ail-ymweld â chymeriadau arbennig yr holl ford o'r 1940au hyd at y 2010au!

Gwisgwch i fyny, canu, dawnsio, a chael hwyl yn chwarae gemau a gweithgareddau. Bydd pob digwyddiad yn wahanol, ond bydd pob un yn arbennig iawn!

Mae tocynnau ar gyfer pob digwyddiad yn £12 am docyn Safonol a £10 am docyn ar gyfer Aelodau £8.

Casablanca U 1hr 42m



Thursday 9th July from 6pm

Step back into the 40's with us as we turn the Lantern into our very own Piano-Jazz Cocktail bar! An evening of black and white attire awaits as this classic feature hits our silver screen.

You'll be welcomed in with the dulcet tones of our house upright piano played by our very own Lovely Lisa as waiters will be on hand to serve you the very finest of house cocktails and wines!

Feel welcome to stay after the film in our bar for more of the same smoky-jazz atmosphere!

Camwch yn ôl i'r 40au gyda ni wrth i ni droi'r Llusern yn far Coctels Piano-Jazz ein hunain! Mae noson o wisgoedd du a gwyn yn aros wrth i'r ffilm glasurol hon daro ein sgrin fawr.

Byddwch yn cael eich croesawu gyda synau bendigedig ein piano unionsyth sy'n cael ei chwarae gan ein Lisa annwyl ni, wrth i weinyddion fod wrth law i weini'r coctels a'r gwinoedd tŷ gorau i chi!

Mae croeso i chi aros ar ôl y ffilm yn ein bar am fwy o'r un awyrgylich jazz myglyd!



Singin' in the Rain

U 1hr 43m

Thursday 16th July
(plus Nostalgia Screening on Tuesday 28th July)

Approaching what some might refer to as the peak of Hollywood's Golden Age, is there a better choice of film to celebrate 125 years of films at The Magic Lantern than this beloved classic? No matter what age you are, this charming gem of a film has something for everyone!

Revisit this heartwarming story followed by the wonderful Sammy Mac performing live musical hits in the bar - both old and new with a few surprises thrown in!

Remember your raincoat of course... you can't come to a Singin' in the Rain screening at the Magic Lantern expecting to stay too dry surely...?

Gan nesáu at beth y gallai rhai ei alw'n uchafbwynt Oes Aur Hollywood, a oes dewis gwell o ffilm i ddathlu 125 mlynedd o ffilmiau yn y Llusern Hud na'r clasur annwyl yma? Ni waeth beth yw eich oedran, mae gan y ffilm arbennig a hudolus yma rywbeth at ddant pawb!

Dewch i ail-ymweld â'r stori annwyl yma, gan ddilyn gyda Sammy Mac, y perfformiwr anhygoel yn canu caneuon poblogaidd byw yn y bar - rhai hen a newydd, gydag ambell i gân annisgwyl hefyd!

Cofiwch eich côd law wrth gwrs... allwch chi ddim dod i ddangosiad o Singin' in the Rain yn y Llusern Hud ac aros yn rhy sych, siawns...?



Butch Cassidy & The Sundance Kid

PG 1hr 50m

Thursday 23rd July

This week we're going western, mainly because we would hate to miss an opportunity to dress up as cowboys!

Who doesn't love a bit of gunslinging in an epic desert adventure set in the 1800's! Based on a true story full of clashes, robberies and wild rides, some view this is one of the last classic western movies and the beginning of the buddy-comedy... so bring a friend and expect some cowboy themed entertainment!

Yr wythnos yma rydyn ni'n mynd i'r gorllewin, yn bennaf oherwydd dydyn ni ddim am golli cyfle i wisgo fel cowbois!

Pwy sydd ddim yn caru gynnu'n cael eu saethu mewn antur epig yn yr anialwch yn y 1800au! Yn seiliedig ar stori wir yn llawn gwrthdaro, lladradau a theithiau gwyllt ar gefn ceffylau, mae rhai'n ystyried mai dyma un o'r ffilmiau gorllewinol clasurol olaf a dechrau'r comedi cyfaill ... felly dewch â ffrind i wyllo adloniant ar thema cowboi!



The Poseidon Adventure

PG 1hr 57m

Thursday 30th July

We have reached the 70's and the decade of the classic disaster movie and we have one of the best for you!

An opportunity to see on the big screen, a film that seemed to grace our TV screens every Sunday afternoon! 70's costumes encouraged as the screening will be followed by the grooviest of 70's tunes with Disco Nick!

A group of passengers led by Gene Hackman must embark on a harrowing struggle for survival after a rogue wave capsizes their cruise ship at sea.

Rydyn ni wedi cyrraedd y 70au a degawd y ffilm drychineb glasurol, ac mae gennym ni un o'r goreuon i chi!

Ar y sgrin fawr, dyma gyfle i weld ffilm a oedd i bob golwg ar ein sgriniau teledu bob prynhawn Sul! Anogir gwisgoedd o'r 70au, oherwydd yn dilyn y ffilm bydd caneuon mwyaf grŵfi'r 70au gyda Disco Nick!

Rhaid i grŵp o deithwyr dan arweiniad Gene Hackman gychwyn ar frwydr erchyll i oroesi ar ôl i don annisgwyl droi eu llong ffordaith drosodd ar y môr.



Friday Night is **Music Night**

Every Friday night we have live music in the bar. It's always fabulous and always FREE! Under 15's must be accompanied by an adult.

Mae gennym gerddoriaeth fyw yn y bar, bob nos Wener. Noson wych, am ddim, bob amser. Rhaid i blant a phobl ifanc o dan 15 gael cwmni oedolyn

Friday 3rd July from 7.30pm
(Doors open from 7pm)

Friday 10th July

Tai Shan & Erica Olsen

Celebrating 15 years of Open Mic Nights at The Magic Lantern!

Yn dathlu 15 mlynedd o Feiciau Agored yn y Llusern Hud!



These two highly-acclaimed Americana/Folk singer/songwriters join forces to bring a unique evening of songs, stories and harmonies to the Lantern.

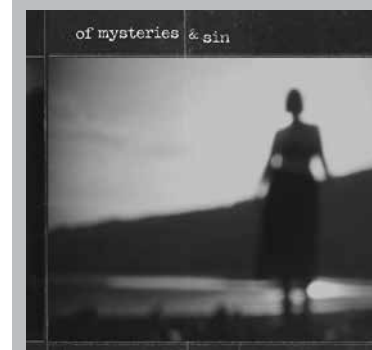
Mae'r ddau ganwr/cyfansoddwr Americana/Gwerin clodwiw yn dod at ei gilydd i gyflwyno noson unigryw o ganeuon, straeon a harmonïau i'r Llusern.

We are holding this event in the main hall. Come and see an Open Mic Night like never before, featuring not 1, not 2 but 3 stages!!

Featuring a wide array of musicians, bands and special guests.

Rydym yn cynnal y digwyddiad yma yn y brif neuadd, dewch i weld Noson Meic Agored fel erioed o'r blaen, yn cynnwys nid 1, nid 2 ond 3 llwyfan!!

Yn cynnwys amrywiaeth eang o gerddorion, bandiau a gwesteion arbennig.



The Magic Lantern Band 'of mysteries & sin'

Our very own house band, The Magic Lantern Band, have written and recorded their second album - this time with 8 brand new original, dynamic, genre-fusing tracks. Get 'of mysteries & sin' on vinyl or CD with brand new merchandise also available.



Mae ein band tŷ ni ein hunain, The Magic Lantern Band, wedi ysgrifennu a recordio eu hail albwm - y tro hwn gydag 8 trac gwreiddiol newydd sbon, deinamig, sy'n cyfuno genres. Sicrhewch 'of mysteries & sin' ar finyl a CD gyda nwyddau newydd sbon hefyd ar gael.

Friday Night is **Music Night**

Friday 24th July

Friday 31st July

Gig-L

The Refreshers



The Cambridge girls return for another evening of fun-filled pop-rock guaranteed to make you smile! Not to be missed!

High energy 80's punk/pop covers from Aberystwyth's top 80's pop/punk covers band! Expect The Clash, The Cure, The Jam, Blondie, The Specials, Bowie, The Smiths... highly danceable night!

Mae merched Caergrawnt yn dychwelyd am noson arall o roc-pop llawn hwyl sy'n siŵr o wneud i chi wenu! Peidiwch â'i cholli!

Caneuon pync/pop egniol adnabyddus o'r 80au gan fand dynwared pop/pync gorau Aberystwyth o'r 80au! Disgwylwch glywed caneuon The Clash, The Cure, The Jam, Blondie, The Specials, Bowie, The Smiths... noson lle gallwch ddisgwyl dawnsio drwy'r nos!

FREE ENTRY/AM DDIM

Music starts from 9pm

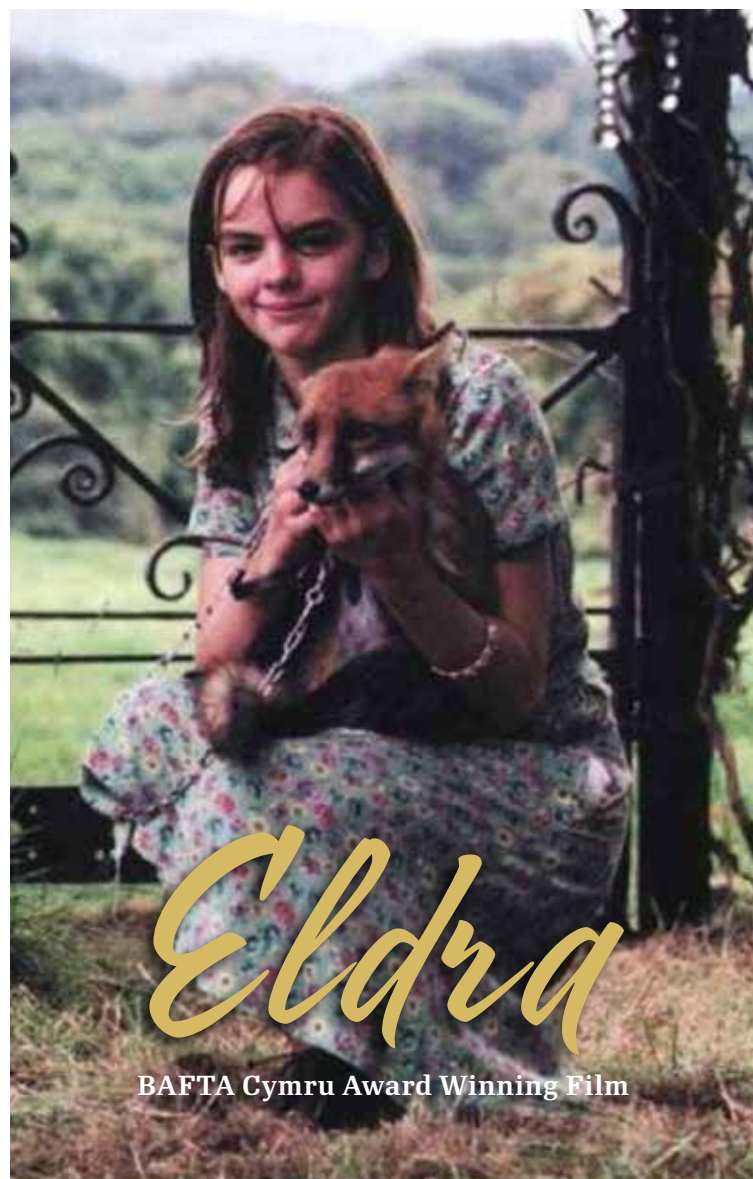
Are you a local business or organisation interested in sponsoring our Friday Nights? For details or a chat about sponsorship, please email saramagiclantern@gmail.com

Ydych chi'n fusnes neu'n sefydliad lleol fyddai gan ddiddordeb i noddi ein Nosweithiau Gwener? Am fanylion neu sgwrs ynghylch noddi, ebostiwch saramagiclantern@gmail.com



Iaith i Bawb is a year long season of Welsh Language films plus events, supported by Ffilm Cymru with funding from the National Lottery.

Mae Iaith i Bawb yn dymor blwyddyn o hyd o ffilmiau Cymraeg ynghyd â digwyddiadau, wedi'i gefnogi gan Ffilm Cymru gyda chyllid gan y Loteri Genedlaethol.



BAFTA Cymru Award Winning Film

Eldra U 1hr 20m

YA

Welsh Language with English Subtitles

With Coffee Morning for Welsh Learners

Friday 10th July at 10am

A gypsy girl arrives in Bethesda to stay with her grandparents. Award-winning drama based on the childhood of real life Romani Eldra Roberts, a descendant of the famous Abram Wood/Roberts Welsh Gypsy Tribe.

Join the pupils of Ysgol Pen Y Bryn who will be taking over The Magic Lantern. They will be running our box office, acting as ushers and waiters and it's a perfect event for Welsh learners, an opportunity to speak Welsh with the children before and after the film screening.

Mae merch sipsi yn cyrraedd Bethesda i aros gyda'i thaid a'i nain.

Ymunwch â disgyblion Ysgol Penybryn a fydd yn cymryd yr awenau yn y Llusern Hud. Gyda choffi byddant yn rhedeg ein swyddfa docynnau, yn gweithio fel tywyswyr a gweinyddion, ac mae'n ddigwyddiad perffaith i ddysgwyr Cymraeg, a hwnnw'n gyfle i siarad Cymraeg â'r plant, cyn ac ar ôl dangos y ffilm.

Gaming on the Big Screen



Tickets £3 for children, free for accompanying adults.

Drop in between 10am and 12pm on Monday's to have a go at Gaming on the Big Screen!

Only 4 can play at a time so depending on numbers you may have to wait for a turn but it's almost as much fun to watch as it is to play.

Bar open for drinks and snacks throughout.

Regular Events

Tocynnau £3 i blant, am ddim i oedolion sy'n gofalu am y plant.

Galwch heibio rhwng 10am a 12pm dydd Llun i roi cynnig ar Gamio ar y Sgrin Fawr!

Dim ond 4 all chwarae ar y tro, felly, yn dibynnu ar y niferoedd, efallai y bydd rhaid ichi aros am eich tro - ond mae gwyllo bron gymaint o hwyl â chwarae.

Bydd y bar ar agor ac yn gwerthu diodydd a byrbrydau drwy gydol y sesiwn.



Every Tuesday at 9pm we welcome Ian and Claire to The Lantern to host their fantastic quiz.

It really is a fun night out and everyone is welcome, no limit to team sizes and it is just £1 per person (payable on the night) Quiz Night is getting more and more popular and we recommend arriving from 8.30pm to get a table. Otherwise it is cinema seats for you, perfectly comfortable but slightly harder to huddle round and confer!

Bob nos Fawrth am 9pm, mae'r Llusern yn estyn croeso i Ian a Claire ar gyfer cynnal cwis gwych.

Dyma noson yn llawn hwyl ac mae croeso i bawb ddod draw - ni chyfyngir ar faint y timau a £1 y pen yn unig yw'r gost (i'w dalu ar y noson).

Mae ein Noson Cwis yn fwyfwy poblogaidd ac argymhellwn eich bod yn cyrraedd o 8.30pm ymlaen er mwyn cael bwrdd. Fel arall, cewch eistedd ar seddi'r sinema - cyfforddus iawn, ond braidd yn anodd dod ynghyd i drafod atebion!



Look out for FC next to the listings. There's no cost involved, there's no pressure to contribute anything, it's just a lovely opportunity to find out a bit more about interesting films and share any thoughts you have if you want to.

Cadwch lygad am FC wrth restr y dangosiadau. Nid oes unrhyw gost, a dim pwysau i gyfrannu unrhyw beth, cyfle hyfryd ydyw i ddysgu rhagor am ffilmiau diddorol a rhannu unrhyw farn sydd gennych, os ydych yn dymuno.

This month's meeting's will take place after the films on the following dates:

Monday 6th July at 7pm
Disclosure Day 12A 2hr 25m

Cynhelir cyfarfodydd y mis hwn ar ôl y ffilmiau ar y dyddiadau canlynol:

Dydd Llun 6ed Gorffennaf am 7pm
Disclosure Day 12A 2hr 25m



Wright & Grainger's Selene 15 1hr 10m

Thursday 2nd July at 7.30pm

Tickets: Standard £14 Seniors £13 Members £10.50 Under 25 £10.50

We are absolutely thrilled to be welcoming back for the 3rd time, the latest production from Award Winning Wright & Grainger. We were blown away by their previous shows Orpheus and Helios and can't wait to see what they have in store for us with Selene.

SELENE is a radical exploding of an ancient myth. It's about how we grow up, living defined by our bodies, and about what happens when that changes. It's a story about what we're stuck in the orbit of. It's a story about the light sides of us and the dark sides of us.

And it's about the stuff inside us. All the wild stuff inside of us.

This event is supported by Noson Allan



Rydym wrth ein bodd o gael croesawu'n ôl, a hynny am y 3ydd tro, y cynhyrchiad diweddaraf gan Wright & Grainger. Roeddem wedi'n synnu gan eu sioeau blaenorol Orpheus a Helios ac rydym yn edrych ymlaen at weld beth fydd ganddynt ar ein cyfer gyda Selene.

Mae SELENE yn ail-ddadansoddiad radicalaidd o chwedl hynafol.

Mae'n son am sut rydyn ni'n tyfu i fyny wedi ein diffinio gan ein cyrff, ac am yr hyn sy'n digwydd pan fydd hynny'n newid.

Mae'n stori am yr hyn yr ydym yn sownd yn ei gylch.

Mae'n stori am yr ochrau da a'r ochrau drwg ohonom. Ac mae'n trafod beth sydd y tu mewn i ni. Yr holl bethau gwyllt y tu mewn i ni.

Cefnogir y digwyddiad hwn gan Noson Allan



Reverend W Awdry :
The Thomas the Tank Engine Man

U 50m

Sunday 19th July at 3pm and 6pm

Tickets Standard £14 Seniors £13 Members £10.50 Under 25 £10.50

A wonderfully funny tale of the clerical railway enthusiast who brought us Thomas and his friends. A new fast-paced piece with music of the age and a story that keeps on track. The Reverend Awdry created stories for his son who was sick in bed, the result was some of the most endearing children's tales and characters of all time. This new energetic production from Searchlight looks behind the trains at the man who brought them magically to life, on time and still hugely popular.

Stori hynod ddoniol am yr awdur clerigol a oedd yn frwd am reilffyrdd a wnaeth ein cyflwyno i Tomos a'i ffrindiau. Darn newydd cyflym gyda cherddoriaeth yr oes a stori sy'n cadw ar y cledrau. Creodd y Parchedig Awdry straeon i'w fab a oedd yn wael yn ei wely, a'r canlyniad oedd rhai o'r straeon a chymeriadau plant mwyaf hoffus erioed. Mae'r cynhyrchiad egniol newydd hwn gan Searchlight yn edrych y tu ôl i'r trenau ar y dyn a ddaeth â nhw'n fyw - yn amserol ac yn dal i fod yn hynod boblogaidd.



What do you do here?

Good question. What am I doing here? Mostly work behind the bar..

What do you do when you're not here?

I work at Arthog as a night warden

Any hobbies?

Drumming! I like history stuff too.

Math attack! 5x75?

5x75? 275? 5 not 3? So six would be... 5x75.. 75x5...375. Got there in the end

Of a right angled triangle A2+B2=?

I haven't done maths for 40 years...c2?

Favourite cinema memory?

The awards ceremony - that was a fantastic night!

Favourite event?

The Blues Brothers, because it was one of the first big band events that we did

Favourite film?

North By Northwest, The Big Sleep, Cruel Sea

What film are you most looking forward to?

I'm really looking forward to Wild Horse Nine - the new Martin McDonagh film.

Best hat?

Best hat would be an Arai Quantum Motorbike helmet, because it saved my life at 80 mph (put 70!)

Which superhero power would you pick and why?

Untangling headphone cables and apron strings.. the Untangler!

Thanks Chris!

Beth wyt ti'n ei wneud yma?

Cwestiwn da. Beth ydw i'n ei wneud yma? Dw i'n gweithio y tu ôl i'r bar yn bennaf.

Beth wyt ti'n ei wneud pan nad wyt ti yma?

Dw i'n gweithio yn Arthog fel warden nos.

Her fathemateg! 5x75?

5x75? 275? 5 nid 3? Felly chwech fyddai... 5x75.. 75x5...375. Wnes i gael

Unrhyw hobïau?

Drymio! Dw i'n hoffi pethau hanes hefyd. yr ateb yn y diwedd.

O driongl ongl sgwâr A2+B2=?

Dydwi ddim wedi gwneud mathemateg ers 40 mlynedd...c2?

Hoff atgof sinema?

Y seremoni wobrwyo - roedd honno'n noson wych!

Hoff ddigwyddiad?

The Blues Brothers, oherwydd mai dyma un o'r digwyddiadau band mawr cyntaf i ni ei wneud

Hoff ffilm?

North By Northwest, The Big Sleep, Cruel Sea

Pa ffilm wyt ti'n edrych ymlaen ati fwyaf?

Dw i wir yn edrych ymlaen at Wild Horse Nine - ffilm newydd Martin McDonagh.

Het orau?

Yr het orau fyddai helmed beic modur Arai Quantum, oherwydd fe achubodd fy mywyd ar 80 mya (rhowch 70!)

Pa bŵer uwcharwr fyddet ti'n ei ddewis a pham?

Datod ceblau clustffonau a llinynnau ffedog...y Datodwr!

Diolch Chris!





The ground floor of The Magic Lantern is fully accessible for wheelchairs, and we have 3 designated wheelchair spaces and can create more when needed. There is a disabled toilet with a Radar Key attached to the cinema building.

We have 6 Dolby Accessibility Handsets for use by anyone who is blind or partially sighted and people who are deaf or hard of hearing.

A member of our team will be able to show you how to access either **Closed Captions** on your handset - which will show descriptive subtitles for most films we show, **Enhanced Audio** - for people who would like the sound to be louder and **Audio Description** which will describe any dialogue free parts of the film.

We can provide headphones or you can bring your own (3.5mm jack lead required).

We have several Descriptive Subtitled (DS) films each week, but the handsets allow anyone who needs subtitles to access them for most of our programmed films.

Check the film description information in our brochure for these logos:



If you see these logos next to a film, it means Audio Description and/or Descriptive Subtitles are available.



Noise Cancelling Headphones

We have several ear defenders for both children and adults to borrow, should they find the volume level too loud.

Accessible Seats

Seats E1, E2 and E3 are freestanding armchairs which are slightly harder and taller than our cinema seating. They are removable so wheelchairs can also use this area.



All seats have ample leg room. Please visit the Accessibility Page of our website for details of our seat sizes.

There are two disabled car parking bays directly in front of the cinema.

In rainy weather you are welcome to bring your mobility scooter inside.

Accessible Screenings

Look out for **Relaxed** or **DS** or **DF** on our listings page. This means the film will be a Relaxed screening or have Descriptive Subtitles (DS) on screen or be Dementia Friendly (DF).

See page 10 for details of DS/DF/Relaxed screenings.

Mae llawr gwaelod Y Llusern Hud yn gwbl hygyrch i gadeiriau olwyn, ac mae gennym 3 lle dynodedig i gadeiriau olwyn, ac yn gallu creu mwy pan fo angen. Mae yna doiled i bobl anabl gydag Allwedd Radar ynghlwm wrth adeilad y sinema.



Mae gennym 6 Set Llaw Hygyrchedd Dolby i'w defnyddio gan unrhyw un sy'n ddall neu sy'n gweld yn rhannol, a phobl sy'n fyddar neu'n drwm eu clyw.

Bydd aelod o'n tîm yn gallu dangos i chi sut i gael y Capsiynau Caeedig ar eich set llaw - a fydd yn dangos isdeitlau disgrifiadol ar gyfer y rhan fwyaf o ffilmiau rydyn ni'n eu dangos, Sain Gwell - i bobl a hoffai i'r sain fod yn uwch a Disgrifiad Sain a fydd yn disgrifio unrhyw rannau o'r ffilm lle nad oes deialog.

Gallwn ddarparu clustffonau neu gallwch ddod â'ch rhai eich hun (mae angen gwifren jac 3.5mm).

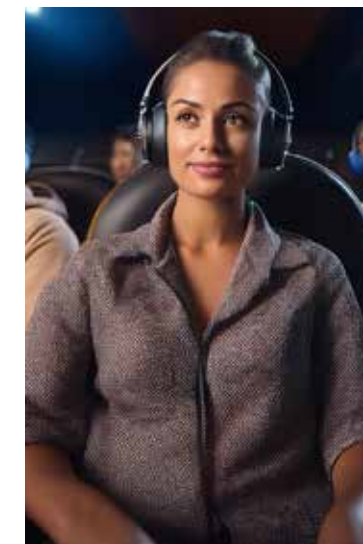
Mae gennym ni sawl ffilm ag Isdeitlau Disgrifiadol (DS) bob wythnos, ond mae'r setiau llaw yn caniatáu i unrhyw un sydd angen isdeitlau i'w cael ar gyfer y rhan fwyaf o'n ffilmiau ar y rhaglen. Gwiriwch y wybodaeth am ddisgrifiad y ffilm yn ein llyfryn am y logos yma:



Os gwelwch y logos yma wrth ymyl ffilm, mae'n golygu bod Disgrifiad Sain a/neu Isdeitlau Disgrifiadol ar gael.

Clustffonau Canslo Sŵn

Mae gennym nifer o amddiffynwyr clust i blant ac oedolion eu benthyg, os byddan nhw'n teimlo bod lefel y sain yn rhy uchel.



Seddau Hygyrch

Mae seddi E1, E2 ac E3 yn gadeiriau breichiau annibynnol sydd ychydig yn galetach ac yn dalach na'n seddi sinema. Gallwch eu symud oddi yno, felly gall cadeiriau olwyn ddefnyddio'r ardal yma hefyd. Mae gan bob sedd ddigon o le i goesau.

Ewch i Dudalen Hygyrchedd ein gwefan i gael manylion am feintiau ein seddi.



Mae dau fae parcio i bobl anabl yn union o flaen y sinema. Mewn tywydd glawog mae croeso i chi ddod â'ch sgwter symudedd i mewn.

Dangosiadau Hygyrch

Chwiliwch am Hamddenol neu DS neu DF ar ein tudalen sy'n rhestru'r dangosiadau. Mae hyn yn golygu y bydd y ffilm yn ddangosiad hamddenol neu gydag Isdeitlau Disgrifiadol (DS) ar y sgrin, neu'n Gyfeillgar i Dementia (DF).

Ewch i dudalen 11 am fanylion dangosiadau DS/DF/Hamddenol.

BOX OFFICE OPENING TIMES

**If you book 24 hours in advance
you can save money!**

Call in or phone the Box Office:

Mon	11am - 9pm
Tue - Thur	3pm - 9pm
Friday - Saturday	6pm - 10pm
Sunday	10am - 3pm

Book online at
www.tywyncinema.co.uk
Telephone: **01654 710260**



Parking

There are 3 general and two disabled parking bays directly in front of the cinema and several parking spaces across the road and next to the Corbett Hotel. You can also find two free car parking areas on Ffordd Gwalia, the road directly between the cinema and St Cadfan's Church.

Dogs

If your dog will sit quietly throughout the film you are welcome to bring them, on their lead, in the STALLS but not on the balcony. However, if your dog starts to cause a disruption, you will need to remove them, without any associated refund.

Prices

Book 24 hours in advance, online, over the phone or at the Box Office to receive a £1 discount on all tickets.

Standard Adult (15 - 60)	£9.00
Members	£7.00
Child (1 - 14)	£7.20
Senior (60+)	£8.00

ORIAU AGOR Y SWYDDFA DOCYNNAU

**Os ydych yn archebu 24 awr
ymlaen llaw gallwch arbed arian!**

**Galwch i mewn neu ffoniwch y Swyddfa Do-
cynnau:**

Dydd Llun	11am - 9pm
Dydd Mawrth - Dydd Iau	3pm - 9pm
Dydd Gwener - Dydd Sadwrn	6pm - 10pm
Dydd Sul	10am - 3pm

Archebwch ar-lein yn
www.tywyncinema.co.uk
Ffôn: **01654 710260**



Parcio

**Ceir tri man parcio cyffredinol a dau ar gyfer pobl
anabl yn union o flaen y sinema, ynghyd â nifer o
fannau parcio dros y ffordd, y drws nesaf i Westy'r
Corbett Hotel. Gallwch ddod o hyd i ddau fan parcio
am ddim ar Ffordd Gwalia hefyd, sef y ffordd sy'n
union rhwng y sinema ac
Eglwys Sant Cadfan.**

Cŵn

**Os bydd eich ci yn eistedd yn dawel drwy gydol y
ffilm, mae croeso ichi ddod ag ef gyda chi, ar den-
nyn. Cewch eistedd yn y seddi ar y llawr gwaelod,
ond ni chewch eistedd ar y balconi. Ond pe bai eich
ci yn dechrau cynhyrfu, bydd angen ichi ei dywys o'r
sinema, heb unrhyw ad-daliad cysylltiedig.**

Prisiau

**Archebwch 24 awr ymlaen llaw, ar-lein, dros
y ffôn neu yn y Swyddfa Docynnau i dderbyn gostyn-
giad o £1 ar bob tocyn.**

Oedolyn Safonol (15 - 60)	£9.00
Aelodau	£7.00
Plentyn (1 - 14)	£7.20
Hŷn (60+)	£8.00



Magic Lantern Cinema Ltd
Corbett Square, Tywyn,
Gwynedd LL36 9DF
Telephone: 01654 710260